

# Tapangka on Franklin - Appendices

06 December 2024



Renewal **SA**



Government  
of South Australia

# Contents

Engagement Invitation.....	3
.....	3
Engagement Map.....	4
Media Release.....	5
Full community responses from drop-in sessions.....	7
Place – Activation feedback.....	7
Place – Retail feedback.....	8
Public space feedback.....	9
Connections – feedback.....	9
Sustainability feedback.....	10
Sustainability feedback – continued.....	11
Sustainability goals.....	11
Ideas and comments.....	12
Full community responses from online survey questions.....	13
Place – Activation feedback.....	13
Place – Retail feedback.....	17
Public space feedback.....	21
Connections – feedback.....	23
Sustainability feedback.....	25
Sustainability goals.....	35
Ideas and comments.....	36
Full written submissions.....	39
Link to online engagement.....	45
Link to the drop-in session display panels.....	46

## Engagement Invitation



**TAPANGKA**  
on Franklin

**INVITATION**

# HAVE YOUR SAY

We are transforming the former bus station site located at 111-129 Franklin Street into an iconic inner-city destination and sought-after mixed-use residential community.

Our vision is inspired by the experience of going on a journey, in Kaurna language this experience is known as Tapangka.

Tapangka on Franklin is being delivered in partnership with private industry, not for profit sector and state and local government.

It will be an exceptional multi-level, mixed-use neighbourhood, including 35% affordable housing, and will generate more opportunities for people to live, work and spend time in Adelaide.

This will be a sustainable development that champions climate resilience, sustainable transport, reduced carbon emissions, the circular economy and sustainability education opportunities.

Renewal SA invites you to share your views at a community drop-in session to:

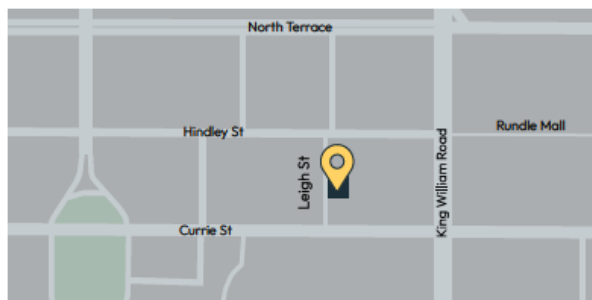
- view and provide feedback on the draft master plan and our draft sustainability strategy
- meet and talk with Renewal SA project team members
- view and learn how you can also provide feedback online any time from **24 August – 15 September 2024**.

Artist impression

**Renewal SA**



Government of South Australia



You are invited to share your feedback at a community drop-in session on:

- ▼ Saturday 24 August 2024 from 11am–2pm, or
- ▼ Tuesday 27 August 2024 from 4pm–7pm

**Venue address:** 28 Leigh Street, Adelaide

Your feedback will help refine the Tapangka on Franklin Master Plan.

To secure your preferred time to attend the community drop-in sessions, bookings are recommended and can be made by visiting: [events.humanitix.com/tapangka-community-engagement](https://events.humanitix.com/tapangka-community-engagement)

For assistance with securing your booking please call the Renewal SA Engagement Team on 1800 993 439.

### ALTERNATIVELY

You can provide your feedback online anytime between **24 August – 15 September 2024** by visiting: [renewalsa.mysocialpinpoint.com](https://renewalsa.mysocialpinpoint.com)



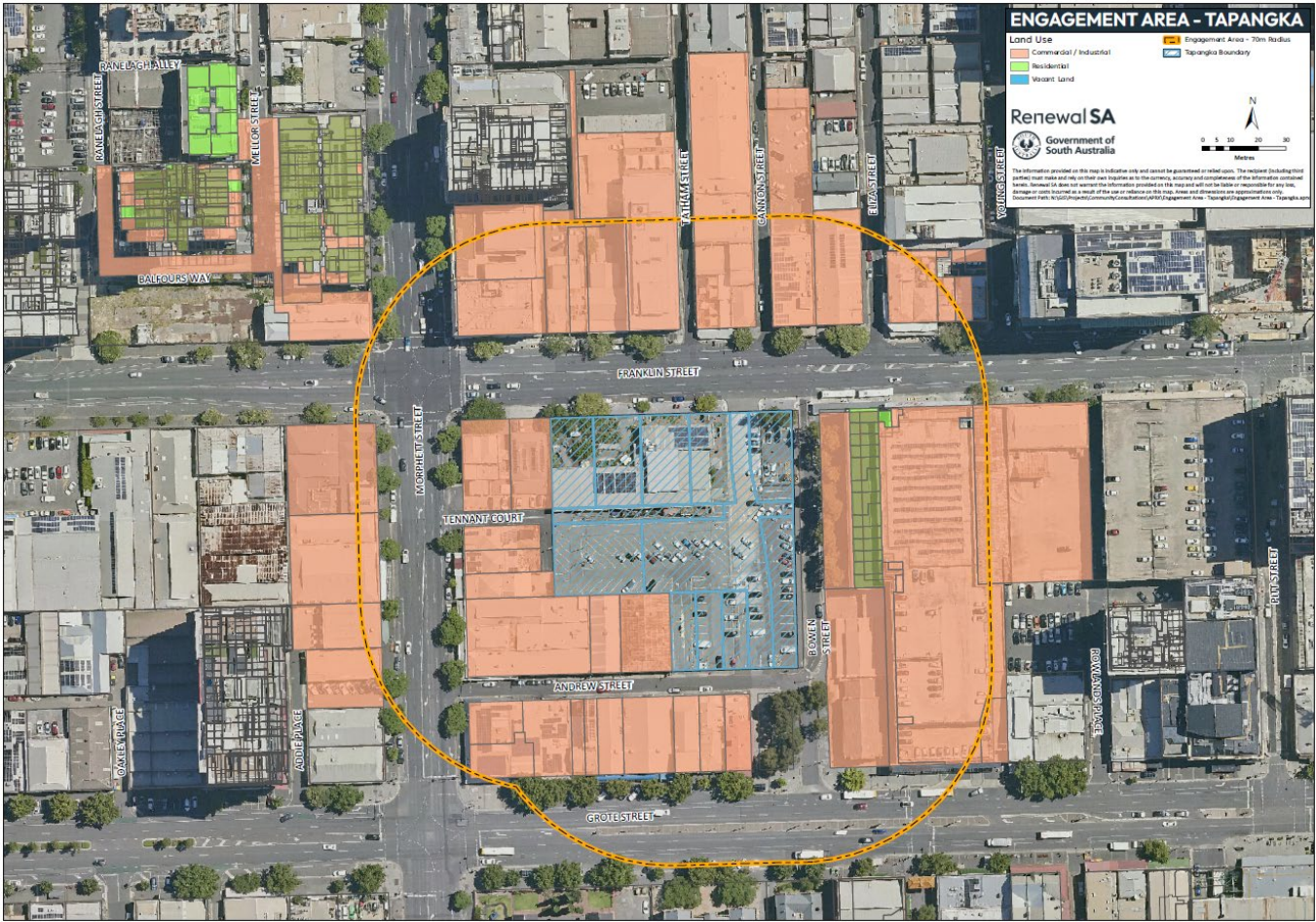
Should you require further information, including alternative ways to provide feedback, or to be kept informed on the progress of the planning for the Tapangka on Franklin project, please register your interest by visiting [renewalsa.sa.gov.au/projects/tapangka](https://renewalsa.sa.gov.au/projects/tapangka)

**Renewal SA**



Printed on 100% recycled paper

Engagement Map





## Media Release

# Media Release

Government  
of South Australia**Nick Champion MP****Minister for Housing and Urban Development**

Thursday, 22 August 2024

## Consultation open for a green and vibrant city centre

Community consultation has opened on draft plans for the redevelopment of the former Adelaide Bus Station on Franklin Street in the CBD.

The public can view indicative concepts and new images for the mixed use, multi-storey 'Tapangka on Franklin' development which is expected to deliver accommodation for approximately 1000 people and will have 35 per cent affordable housing component.

The former Adelaide Bus Station site will be transformed with mixed-use towers and a signature building. It's proposed to include a 200+ room hotel, major build-to-rent development, market housing for sale as well as commercial and retail tenancies.

Renewal SA will lead community engagement on the plans for the development, with two drop-in sessions on Saturday, August 24 and Tuesday August 27, 2024 at 28 Leigh Street in the CBD. Feedback is also being collected [online](#) until 15 September.

The public will have the chance to learn more about the project, view indicative plans and can provide feedback and ideas on the precinct's public accessible spaces and connectivity, sustainability objectives and uses that could activate the precinct and encourage people to visit.

They will also be able to learn about the precinct's draft sustainability strategy which seeks to establish leading benchmarks in the areas of energy, climate resilience and circular economy.

The design of 'Tapangka' will reduce its carbon emissions by promoting and measuring carbon, thermal performance, energy efficiency and renewable energy from the outset. More active transport modes such as walking, cycling and public transport will be promoted over private vehicle use.

The precinct will have a generous plaza and landscaped open space with \$1.2 million committed to upgrade existing public spaces of Bowen Street and the plaza outside the former Hampshire Hotel.

**Media contact:** Jack Berketa 0438 898 859**[premier.sa.gov.au](https://premier.sa.gov.au)**

Construction will begin in 2026 following a national search and appointment of development partners to deliver the proposed vision.

Concept images for the proposed development are available [here](#).

**Quotes attributable to Nick Champion**

*This development will bring visitors and workers into the precinct and help more people secure housing through affordable sales and rental.*

*We want this to be a benchmark for sustainable developments in this state.*

*We are keen to hear from South Australians about what they think of the draft plans and in particular what elements could be incorporated to activate the public spaces.*

## Full community responses from drop-in sessions

### Place – Activation feedback

Tell us what kind of activities would attract you to Tapangka
History of the site, the area and city in buildings and activities
<ul style="list-style-type: none"> <li>– Restaurants</li> <li>– Bars</li> <li>– Small events venues</li> </ul>
Community gatherings and workshops Low cost or free things that already happen at the Joinery
Restaurants Concerts
Low-cost community meeting and event space for groups with little-to-no funding, which the Joinery already provides
Exciting architecture Site – but the community spaces are non-existent 😞

Who would you take with you
Friends and family
Friends Not my mother in law

What time of the day or night would you visit?
Morning or late afternoon
Evening/night
Any, depending on event
Arvo Night time

## Place – Retail feedback

What are some of the retail or local services you would like to see in this part of the city?
Bars
<ul style="list-style-type: none"> <li>– Restaurants</li> <li>– Grovers</li> <li>– Form of entertainment</li> <li>– After hours like bar + escape room - bowling</li> </ul>
Sports shop Technology
Second hand goods Property exchange to support the circulate economy
GP Clinic
Community meeting spaces – low cost
Space for dis-connected people to meet others and form community
Toy shop, clothes shop
TV shop

What ideas do you have from other places you've visited that could inspire the retail and cultural experience of Tapangka?
– Showpiece for Green Adelaide urban greening strategy
<ul style="list-style-type: none"> <li>– Nicely designed public real (soft land scaping)</li> <li>– Street furniture</li> <li>– Art structures both modern and First Nations inspired</li> <li>– Example Thorndon park</li> </ul>
– Trees that provide shade with minimal future maintenance/dropping of limbs
<ul style="list-style-type: none"> <li>– Tree canopy</li> <li>– Green</li> <li>– Sustainable</li> </ul>
– Public realm design inspired by First Nations culture
– Drawing



## Public space feedback

What three words describe your favourite urban public space?
<ul style="list-style-type: none"> <li>Interactive, Community-building, Accessible</li> </ul>
<ul style="list-style-type: none"> <li>Nature, Peaceful, well kept</li> </ul>
<ul style="list-style-type: none"> <li>Green, engaging, mixed-use</li> </ul>

What do you like to do in urban public spaces?


Relax & unwind	Socialise with friends and family	Exercise	Enjoy cultural or entertainment	Shop or dine	Participate in community activities	Engage in recreational hobbies
3	7	1	7	6	11	-

## Connections – feedback

How are you likely to travel to/from Tapangka?

Walk	Use a mobility aid	Ride a bike/e-bike	Ride other micromobility	Catch the bus	Catch the tram	Catch the train	Private vehicle	Taxi/ride share
8	1	3	-	-	2	-	1	-

What would improve your motivation to walk, cycle or use micromobility or public transport to travel to/from Tapangka?

I need more information about my options and how to access that time of transport	I need this type of transport to be cheaper	I need good on-site facilities such as micromobility hub/bike and scooter parking/bicycle lanes	I have another idea
		Disabled friendly access where mixed modes of transport exist. Eg blind access mixing with e-scooters → (?) for accidents	Improved space around – fewer derelict buildings
		Purposed (?) design bike lanes	Pedestrian friendly public realm (people > cars)

## Sustainability feedback

How old will you be in 2030?

Under 20	In my 20s	In my 30s	In my 40s	In my 50s	In my 60s	In my 70s	In my 80s or older
-	-	7	1	3	1	-	-

## Society

How do you think society will have changed when you think about each of the themes? Will there be new rules or legislation? How will community preferences have changed? Or will things be much the same as now?

Energy	Transport and access	Climate resilience	Circular economy	Sustainability education and culture	Other
Green energy mainly supported by the new technology	End of trip facility in every new building (as a standard)	Water capture to irrigate landscaping (rainwater)	Workshops for repair clothes and other things	Normalised	Intentional design to bring social cohesion and positivity
Increased RE* Hopefully represent(?) for org/businesses to purchase RE(off the SAGRID) *Renewable Energy?	Reduced reliance on cars (definitely ICE* vehicles)  *Internal combustion engine	Hopefully people will be more aware More buildings becoming Green Star rated	Legislation – hopefully improved	Subjects in schools	Accessible community spaces for use without high costs or difficult bureaucracy
	Less cars More public transport Better end of trip facilities	Nature positive locally & globally			
	More bike lanes and public transport	Carbon positive at all scales			
	Walkability Safe cycling infrastructure Strong investment in public transport				

## Sustainability feedback – continued

### Your needs

How do you think your needs will have changed in ten years' time when you think about each of these ideas?

Energy	Transport and access	Climate resilience	Circular economy	Sustainability education and culture	Other
	Need to ensure that EV charging points maintained even when being built	Buildings and cities adapted to more severe weather events	First option more specialised retailers from household to construction materials		A relationally and emotionally health community
	Access for people with reduced mobility				

### Sustainable Living

On a scale of 1-10, how important is sustainability to you when choosing somewhere to live?

1 – not likely	2	3	4	5	6	7	8	9	10- very likely
							1	3	7

## Sustainability goals

If you were in charge of creating this development, which sustainability goals would you choose?

Highly energy efficient	Design for transport beyond cars	Biodiversity enhancement	Passive thermal comfort	Resource recovery	Lower embodied carbon in construction	Education and storytelling
6	8	5	9	2	4	6

## Ideas and comments

### Is there anything you wish to comment on that hasn't been addressed?

*Roof top garden which  
will use green bin/waste as mulch and use storm water  
help with community activities, as well*

### What did you think of today's drop-in session?

- *Engaging for people who are Neurodivergent*
  - *Intuitive and easy to grasp*
- 
- *Great engagement*
  - *Love the idea of the caps in jars*
  - *Questions around sustainability did not seem related to the project at first glance*

## Full community responses from online survey questions

### Place – Activation feedback

#### Q1 What kind of activities would attract you to Tapangka

1. A grassroots community space, like the Joinery which is already there.
2. As a young person who is very worried about my future, in regard to climate change, social equity and more, community spaces are extremely important. This new development worries me to some degree, I usually go to the Joinery quite often, for local environmental group events such as SAGE, where we gather, connect and discuss ideas for this growing world. I don't mind that the joinery is a bit old and run down, I'd love it to stay the way it is, or at least for there to be a similar space + community garden where people can find community in these tough times.
3. A set up similar to the great set up that the joinery currently has.
4. Community-driven, social enterprises like The Joinery!
5. Community events that change often
6. Community garden space for activities
7. Community hub where groups can meet, share food, host community events/classes/training sessions
8. Community info sessions, workshops on sustainability, talks, exhibitions
9. Community meetings, information sessions, group based gardening!
10. Community movements
11. Community spaces at low cost or free to community groups who need those spaces to run.
12. Community spaces like The Joinery; community gardens, community meeting spaces. Affordable housing (to those living on Centrelink, not just Affordable" for the Adelaide CBD). Big emphasis on building community yo thrive collectively. Not commercial spaces which are inaccessible"
13. community spaces, spaces which are low cost (not available at commercial rents) and adaptable spaces that can be used for community groups to meet
14. Community spaces that foster important physical meeting places to strengthen connection between people
15. Eco-friendly community spaces such as the joinery where people can book spaces for themselves. Any climate or social justice related activities in shared community spaces would be fantastic. Indoors and outdoor spaces that can allow for advertising, op shops, areas where community members can share things they don't always need (eg "libraries of things"), spaces for music and artists
16. Environmental groups and events, specifically a home for the Conservation Council and the 300 groups it supports each year.
17. Free community connection events or skill learning workshops like the ones currently conducted at the Joinery by SAGE
18. Free community events
19. I attend events at The Joinery and am absolutely devastated at the prospect of losing this special place in our community.
20. I'd rather go to the joinery
21. I love the area as it is. The Joinery is a rare and essential meeting place for community groups. It provides a place of connection and community that is so essential in a world increasingly impacted by isolation. We need the Joinery to stay as it is.
22. It would have to offer the same access for the community to meet, learn and lead positive local action at little to no cost. It would need to have both indoor and outdoor accessible spaces. It

would need kitchen facilities and spaces to grow food. It would need to offer actual benefits for Kaurua people and not just hijack their culture for profit and cultural capital

23. I would only go if you maintained the community space currently known as the Joinery
24. Meetings of community groups focused on environmental care, sustainability and social justice.
25. night markets, something different, community forums, indigenous exhibitions
26. Night time events, food markets/stalls, live music and entertainment
27. None - redevelop another site
28. None. That's where the joinery should be.
29. One off events - Community groups, festivals, food centric. Play activities for adults and children.  
Dog run area
30. Please keep the joinery!
31. Recreation that complements the Central Market and surrounding precinct. Maybe a rooftop eatery with a viewpoint.
32. Retention of the Tesla supercharger on site
33. Shared spaces for local grassroots communities (ie how the joinery has functioned for time!). The community bike shed and garden are such lovely places for many.
34. Spaces for community
35. Street theatre, live music, outdoor dining
36. Street theatre, natural spaces, Aboriginal cultural events, art shows.
37. Sustainability, grassroots organising, community building activities such as workshops/skills sharing etc
38. Sustainable and community focussed
39. The joinery is so important if we want to keep building on the importance of community and growing Adelaide. I can see a reach for making this space mean something but I think it's missing the mark as we have already cultivated such a beautiful space in the joinery for things like SAGE
40. The joinery! This place has been a community safe home for many. This space encapsulates everything community center should be. It provides an open space, private rooms, a garden, easy accessibility, free parking, community kitchen space and enclosed outdoor space. I wish to see this place stay or be incorporated into the new plans.
41. The kinds of free and low cost community activities currently available at the venue that occupies the site.
42. The sort of activities currently available on that site - home of South Australia's peer environmental body Conservation Council SA and a host of related activities. These include a bike repair shop, eco-cafe using local and sustainable foods, a community garden and meeting rooms available at low cost for environmental and like groups to meet, exchange views and plan for a more sustainable future. This site has also hosted major meetings and speakers from interstate, including Dr. Bob Brown and many others active in the field of conservation and sustainable lifestyle.



**Q2 Who would you take with you?**

1. Anybody, if there is a grassroots, affordable community space.
2. Anyone interested in climate/sustainability causes and other social justice issues (but mostly young people as I am younger). Anyone interested in building community networks, supporting artists, volunteering, sharing etc.
3. As many friends as possible, and for community awareness events I would try to bring decision makers, and for advocacy related events I would invite members of adjacent communities to connect
4. Bicycle, laptop, whatever tools were required for craft projects.
5. Everyone
6. Everyone. This space should not be privatized, and should continue be accessible to the public
7. Family, friends
8. Friends
9. Friends:)
10. Friends and family
11. Friends and partners
12. Friends, family kids
13. Friends, family, strangers
14. Friends, networks, community members, colleagues, residents
15. Friends, work colleagues and stakeholders.
16. I currently take my partner, friends, and isolated people in need of community support to various events at the Joinery, but I wouldn't go if it was gentrified like this
17. I have made so many beautiful friends in the joinery
18. I love meeting with SAGE at the Joinery. I have met so many like minded friends in that group. I felt amazed to find such an incredible community in the heart of the city. It is truly unique.
19. I might take a laptop for a presentation, notebook for taking notes, wine and nibbles for sharing with others.
20. Like minded people, other groups who meet and hold public sessions on how to build a sustainable, low energy home (for example) and how to plant a water wise garden or revegetate/rejuvenate bushland. Many groups already use this site and will be displaced and lose the existing opportunities for networking. These include groups such as 'Second Nature Conservancy' (formerly Wellington-Goolwa LAP), ERA(SA), Conservation SA and many other groups.
21. my family (partner and two kids under 4)
22. My family, which includes a daughter aged three years old.
23. My friends
24. My friends and community
25. My partner, and probably close like-minded friends
26. Myself, friends
27. No one if the joinery is not kept
28. No one. Save the joinery.
29. Not sure
30. Partner, group of friends
31. People who want to connect and create community without needing to spend money
32. The community not property developers
33. The people I go to the joinery with
34. This is an interesting question, the obvious answer would be friends and family. However, I'll use this space to mention a worry regarding the homeless population that usually reside around the bus station area. These people feel comfortable in the area now, however will probably find

somewhere else with this new development put in place. Brand new spaces like this, would potentially exclude poorer communities in south Australia - how can this space be used to help provide these people with equity? Would this space be more accessible to poorer or richer communities? Who needs it most?

### Q3 What time of the day or night would you visit?

1. Afternoon
2. Afternoons and evenings
3. after work, after 5pm
4. After work hours
5. All reasonable hours. The space should not be limited by the private residents and the poorer residents shouldn't have to bear the brunt of any noise for the benefit of those paying more.
6. Any time
7. Anytime from the early afternoon to evening
8. As needed
9. At the moment, I believe the joinery is used all day for certain local work spaces and local community hire. These spaces are used day and night - this would be great to keep the same.
10. Currently there are meetings in community spaces and rooms during both day and night time, depending on the number of people likely to attend which usually results in a night meeting to enable more people to be able to attend.
11. Day and evening.
12. Day and night
13. Day, evenings, weekends
14. Day preferred
15. daytime
16. During the day
17. During the day on weekends and evenings on weekdays
18. either
19. Either
20. Evening after work
21. Evening, maybe after a shop and dinner at the Central Market.
22. Evening, or afternoon on weekends
23. Evenings
24. For me it's more a question of when things are. There are so few free or affordable options available in Adelaide that it's not about when I feel like doing things, it's a question of when there are things I am interested in doing. You make time.
25. I currently go to the Joinery at various times from the middle of the day to late night when events are running, but I see no reason to visit if gentrified, it would shut most of my community out.
26. I Go often but I won't if it's gone
27. I normally visit on a Sunday afternoon
28. Never if the joinery is knocked down
29. Never. We want the joinery.
30. Night time, after work or on a weekend evening
31. Surely there will be a variation of things to do during the day and night
32. the joinery provided a space available at anytime. Again, this should continue to be the way it is run. Available day and night any day of the week. Cared for and run by the community.
33. Weekends and evenings

34. Weekends, day time or early evening
35. Weekends or after regular work hours
36. Whenever
37. Whenever there are grassroots, community events on, but most likely in the evenings or weekends.
38. Whenever there are groups and events which pique my interest

## Place – Retail feedback

### Q4 What are some of the retail or local services you would like to see in this part of this city?

1. A community garden, an affordable or free venue for environmental and community groups to book
2. Affordable community event spaces, public leisure areas, social spaces, dependable public transit, bike repair utilities, affordable casual dining
3. An affordable grassroots community space
4. A similar set up to the joinery
5. bulk food store
6. Cafes, food gardens, community compost, indoor/outdoor community spaces
7. cafes, restaurants, smaller boutiques, maker spaces, markets.
8. Community garden, free bicycle workshop, farmers market, repair cafe
9. Community spaces for organising
10. Community spaces like The Joinery. No more commercial retail spaces, we have too much of that
11. Community spaces which are accessible and open
12. Continuation of recharge of E-vehicles, bike repair shop and services, community garden and sessions to encourage people to grow at least some of their fruit and vegetables (even a lemon tree can be a wonderful asset); a focal point for public meetings about environment, sustainable living and in particular sustainable housing. Groups also value the opportunity to learn about the benefits of a different economic system to the neo-classical economics which use GDP and GNP to record public benefit, which in fact is only recording consumption.
13. Craft shops, alternative retail
14. I like that that part of the city doesn't have retail services. It is instead a purpose built space for the community not profit.
15. Independent store owners
16. I understand that this development has a focus on pulling in people to increase economic value in the area, we just really need to think about social equity within these spaces. Are there any plans to help the homeless population in the area (at least)? AND I'd really hope that some spaces are available for hire + a community garden is re-built + the space aims to pull in people from lower working classes, I believe that these people need free community spaces most, so they can support each other and lift each other up. With a cost of living crisis, we can't ignore those suffering the most.
17. I want to continue to see this area used as a low cost, community inclusive meeting area. the Joinery provides important connection and community. This eases the burden on mental health services and is overall good for our society. Much more beneficial than retail.
18. I would like the plan to retain the community bike workshop that is there and community cafe.
19. I would not like to see retail in this space. I want community space that doesn't need to spend money. As the current site is.
20. "Library of things", pop shops, volunteer-run services eg food hubs, sustainable stores/cafes, open spaces/venues for hire, community gardens, sensory friendly spaces

21. More cafes?
22. No interest in retail, we have enough shopping in the city. We need spaces for people to meet and build community without spending money to get in.
23. No more retail consumerism. Community first
24. None!
25. No retail, only free community spaces
26. Not interested in more retail, local community centres have a positive impact
27. Places to play for every age - board games, climbing walls, Chess
28. Recreation that offers passive surveillance and activation for the surrounding streets.
29. Restaurants, Bike parking and servicing,
30. Services I would like to see is spaces that are available for community groups to meet. this is crucial for this part of the city as it brings people together preventing loneliness and creating spaces where people feel they can belong.
31. Services to assist community with circular economy solutions. Art, culture or environmental advocacy group services/engagement. A mix of casual and refined dining experiences. Fresh food outlets
32. Spaces like the joinery
33. The bike repair shop. The sage op shop and the cafe that is currently within this space.
34. The city doesn't need more retail, it needs more electric vehicle charging infrastructure and dwellings
35. The joinery
36. The joinery stay in the area
37. Upcycle shop, repair shop, no waste cafe. I love the bicycles for refugees initiative at the Joinery and would love to see its longevity
38. Venues and activity spaces that are community owned and operated and not operated as for businesses who charge commercial rents and fees. It needs to be focused on benefit to the community rather than the annual return of a property investor.
39. We don't need more retail services in the city, we need more community spaces. People rallied to save the Crown and Anchor for a reason and that is because their city is continually being lost to property developers and gentrified. The Joinery currently hosts essential community gatherings at a low cost and is one of the only places in the city where this occurs and is accessible to young people.
40. We have enough

**Q5 What ideas do you have from other places you've visited that could inspire the retail and cultural experience of Tapangka?**

1. Aboriginal or LGBT+ art displays, acknowledgement to Country plaque
2. A repair cafe could be the bustling heart of a community-engaged precinct
3. A reuse and repair hub, green businesses and space for community groups
4. As I've said, I find retail incongruous to community space. The space is used by vulnerable people and they should continue to remain safe to use that space without similar problems arising as did with publicans on Witmore Square complaining about community services
5. Avoid a retail experience. Draw culture from the community coming together
6. Chill out zones - lounge areas
7. Community space
8. Don't make it a brick prison
9. Human scale and activation at multiple levels - Azabudai Hills, Tokyo and the High Line in New York City. Ground floor activation everywhere - Barrangaroo - Sydney. Rooftop productive garden with cafe and restaurant - Burwood Brickworks outside of Melbourne.
10. I don't have any suggestions besides to not develop the area. The everyday people of Adelaide don't want or need more high rise living/retail spaces in the CBD, I don't particularly care if you pretend to be conscious of the indigenous people by giving it a Kaurna name (while shutting out working class Kaurna people from their own land thru a development project), and I highly doubt the project is going to be genuinely "eco friendly"
11. I love it as it is.
12. I think the developers should visit the Joinery, at various times throughout the month, and they should attend a SAGE session - which is open to anyone on the last Sunday of every month 4:30-8:00, this space has helped me so much in finding hope and connections with others. I'd love the developers to experience the space, to see what will be missed. About 100 young and old people join in this space, and some amazing things have come from it. I see a lot of worried young people, and a lot of people struggling financially (while working full time) - how can this newspace support these people?
13. I think there should be a grassroots community space like the Joinery there.
14. Marrakech square
15. Melbourne Central, with its colourful retail/hospitality offerings and intimate connectedness to its surrounds.
16. More greenery!
17. Nightingale communal spaces, The joinery hub with garden & bike workshop
18. No comment
19. Retail is overrated unless including upcycle and second hand. Exhibitions, performances, dance, music, arts are a must as a positive cultural engagement
20. Safe community spaces like the joinery.
21. save the joinery
22. Similar space to the Joinery - accessible, free or low-cost, reconfigurable
23. Spaces that uplift and empower those in community who otherwise don't get these opportunities, like The Joinery
24. Stirling markets bring such a crowd - mix of open and covered spaces with places to eat.
25. Take inspiration from European squares, open spaces with zero cars, places to sit and eat outdoors in the shade, but give it a local twist and celebrate Kaurna culture
26. That demolishing buildings isn't good

27. The Berlin grassroots artist and sustainability movement does the combination between retail, hospitality and community really well - not too slick, a bit underground and makes everyone regardless of class and economic status feel at home
28. The creation of a 'local market' atmosphere which might operate weekly or fortnightly and feature foods (perhaps different ethnic cuisines) and artisan products for sale which also reflects our multi-cultural society and encourages friendship, exchange of ideas/foods/recipes and networking around food preparation and use of cooking methods and use of different cuts of meat and vegetables. Many of these foodstuffs were unknown to most Australians a few decades ago and there is no regular forum which showcases them.
29. The existing venue on the site is a great example of the kinds of services and the community development ethos I would love to see. If you destroy that to create another sterile corporate space, another classic Adelaide shopping complex with no tenants then we'll never break out of the mindset that we're trapped in the boom bust cycle of great attendance and activation during the festival seasons and a giant Westfield at other times.
30. The Joinery
31. The Joinery as it is now is a very good model for it.
32. The joinery is a cultural experience of itself. A safe space for all to connect.
33. The Joinery is an amazing example of community space that genuinely values the community and creates space for community connections
34. The Joinery is so full of culture, Tapangka must have the facilities to host what we already do at the Joinery.
35. Various community gardens
36. Welcoming accessible free community events like SAGE hosts at the Joinery, small community venue areas like the Joinery or City Library, community led natural environment like the Joinery or other community gardens, free public utilities like the charging or recycling stations in the City Library, cozy leisure spaces like 3 of Cups Teahouse, free food and other community necessities like SAGE hosts at the Joinery



## Public space feedback

**Q6 Think about some of your favourite urban public spaces – what three words would you use to describe them?**

Word 1	Word 2	Word 3
market	diverse	friendly
Inclusive	Green	Sustainable
Community	Open	Accessible
Not	Demolished	Thx
adaptable	green	Beautiful
Green	Spacious	Neat
Green	Community	Shade
Versatile	Welcoming	Open
Free	Community	Community
Green	Fresh air	Soulful
Free	Grassroots	Agency
Affordable	Accepting	Free
Nurturing	Communal	Free
Joinery	Community	Diverse
Community focussed	Non-commercial	inviting
Social	Equitable	Green
Green	Colourful	Natural
green	lively	Free
Sunlit	Characteristic	inviting
Communal	Free	accessible
Green	Quite	Sustainable
Open	Green	Seating
diverse	green	Versatile
Green	Productive	Community lead
Green	Welcoming	Accessible
community	open	Community
Community	Accessible	The joinery-education
Calm	Shaded	Bright
Sustainable	Electric vehicles	Free
Accessible	Free	Social

Accessible (financially + equitably)	Green	Communal
Community-oriented	Inexpensive	Spacious
Green	Open	
The joinery- nurturing	The joinery- restoring hope for our community	
Intimate	Fresh	
Community	Accessible	
Community	Sustainable	
Vibrant	Casual	
Accessible	Diverse	

**Q7. When you use urban public spaces, what do you like to do?**

Category	Ranking
Socialise with friends and family	4.16
Participate in community activities	3.93
Enjoy cultural or entertainment events	3.16
Relax and unwind	2.56
Engage in recreational hobbies	0.79
Shop or dine	0.56
Exercise	0.23

## Connections – feedback

### Q8. How are you most likely to travel to and from Tapangka

Category	Total
Walk	1
Ride a micromobility (scooter)	-
Use a mobility aid (walker, wheelchair)	1
Ride a bike or e-bike	13
Catch a bus	10
Catch a tram	4
Catch a train	3
Private vehicle (car, motorbike)	5
Taxi or rideshare	-

#### Other comments:

1. Cycle
2. Save the joinery
3. Share my or friend's vehicle to take several friends to enjoy the experience. No rail available and bus is limited to strict timetable from outer areas. Public bus service (esp. express) recently much reduced.

### Q9. What would improve your motivation to walk, cycle or use micro mobility devices or public transport to get to and from Tapangka?

Category	Total
I need more information about my options and how to access that type of transport	3
I need this type of transport to be cheaper	8
I need good on-site facilities such as micromobility hub/bike and scooter parking/bicycle lanes	18
I need safer bike lanes and more frequent public transport that allows bikes onboard	1

#### Other comments

1. I would walk there, but the 'walking experience' on the surrounding streets needs improvement: better footpaths, less cars, more passive crossing and connection opportunities.
2. Need to be able to travel there safely with plenty of secure parking options.
3. Please let us keep the joinery
4. Public transport connection direct from train station, and reliable (frequent, arrives on time, runs late nights and weekends). Currently public transport takes twice as long as driving even though

the train portion of the journey is significantly faster, due to the walking required for the bus connection, and infrequent timetable.

5. "RAIL is urgently needed for Mount Barker and Murray Bridge. We had rail in the 1950s-why not now?"
6. Real cycling infrastructure that makes it safe to ride in Adelaide. Not paint, not thoughts and prayers. Grade separation.

## Sustainability feedback

### Q10: How old will you be in 2030?

Category	Total
Under 20	-
In my 20s	6
In my 30s	21
In my 40s	7
In my 50s	4
In my 60s	1
In my 70s	2
In my 80s or older	1

### Q11 How do you think society will have changed in 2030, when you think about Energy? Will there be new rules or legislation? How will community preferences have changed, or will things be much the same as now?

1. Decentralised renewable energy systems
2. Electricity will all renewable in South Australia, so there will be a preference in SA to not have gas to reach climate targets. But doubt there will be any legislation change because current Labour government are invested in gas extraction and Liberals won't ever mandate electric only developments.
3. Electric vehicles will be mandated
4. expectation that green energy will be prioritised to reduce consumption and footprint.
5. Fossil fuels will be phasing out rapidly and decentralised energy generation and storage will be the norm
6. fossil fuel treaty
7. Gas will be phasing out, no gas connections for new developments both in the CBD and suburbs, incentives will be in place to transition from gas to electric for household use
8. Given our state and federal governments are in bed with the oil and gas lobby, unfortunately I can't see much changing in the near future.
9. Gosh, well I'd hope that we are actually focusing on a transition to renewable energy, and that NO new oil, coal or gas mines have been opened. I hope that there has been a just transition for mine workers. I hope that renewable energy sources are accessible for the majority if not all. At the moment renewable energy sources are far too expensive for the majority of the population. Sadly I have doubts about our progress made in 2030, but we shall see!
10. Hopefully more regulation around electricity pricing + policies that encourage green power
11. I believe that by 2030 we will need to be taking the climate crisis seriously as it will be right in our faces. We will need community gardens more than ever and community meeting places.
12. I expect we'll be in the same place we are now, trying to drag governments away from their fossil fuel industry donors to get a genuine commitment to exclusive use of actual renewable energy (eg, not gas)
13. I hope so, we need better rules around what energy is used and how much.

14. I hope Sustainability is much more everyday, that all organisations and businesses and those with power will have sustainability legislated and in practice. Urban canopy should be minimum 30% of the space, we need to step away from fossil fuels completely only using solar, wind, etc. Recycling, composting will be accessible and everyday.
15. I hope there'll be more restrictions on carbon emitting fossil fuels, and more green energy
16. I hope there's legislation against new coal and gas projects at that point!! I want legislation so that polluting industries have to pay for the cost of their projects rather than taxpayers. I want the public to consider policies where fossil fuel profit gets reinvested back into the community to ease cost of living. I want the community to have more incentives to transition to clean energy in their homes. I want EVs to be cheaper and charging stations more accessible. I want stronger enviro laws where coal and gas projects are assessed on their climate impacts prior to approval
17. I think electric vehicles will be better supported and more common, and micro-mobility will be more mainstream with better provision for this. Hydrogen and renewables will overwhelmingly lead the way, but misinformation needs to be better battled.
18. I think it's spaces like the joinery where people can gather to talk about these things and feel a sense of importance and change.
19. It will be worse if we do not undertake climate action asap.
20. Less petrol-fuelled activity. Legislation addressing climate emergency
21. Likely increased renewables usage in SA and decreased demand for fossil fuel exports, however most likely minimal change to energy efficiency requirements (air conditioning, insulation, lighting usage etc)
22. Renewable energy most likely
23. SA should be net zero. Much more green spaces and buildings designed to withstand extreme Weather include hear
24. SA will be 100% renewable electricity and EVs will dominate
25. Society will not survive the next six years without community.
26. Sustainable
27. Taxes on low energy rated products
28. The community will be strongly opposed to extractive industries - this includes lithium mining for batteries. We will expect living spaces to be well insulated so that they don't require air conditioning. Rather than focussing on just renewables there will be a shift towards minimizing energy use in general.
29. There will be a requirement for electric car chargers and a lot more of society will be powered by electricity from renewable sources.
30. Unless the government realises the dangers of climate change and the fact that S.A. farmers are right now in the grip of the most alarming 'green drought' of my lifetime (over 70 years) nothing will change. We need to stop building high energy, affordable" housing which is truly not affordable to run and start reducing the use of air conditioning (the fastest growing energy use on the planet) and build only sustainable
31. We'll be facing the reality of climate disaster, late stage capitalism, and government incompetence. We need the joinery to build strong communities that work on these issues.
32. With climate changes being so present and affecting majority of the population across the globe I would hope we will be greener, consciously sustainable and using renewables only



**Q12 How do you think society will have changed in 2030, when you think about Transport and Access? Will there be new rules or legislation? How will community preferences have changed, or will things be much the same as now?**

1. Adelaide Metro network likely unable to meet the growing demand for riders. Likely increased community support for bike transit but unlikely large scale infrastructure improvements
2. As above. Save the joinery.
3. Better busses and trains! The ability to catch public transport all across the country, no reliance on private cars
4. Community will prefer to use public transport, bikes, etc but will still require car access for disabled people and deliveries.
5. Electric vehicles and city cycling will be common and universal design will enhance private and public spaces
6. Electric vehicles will be mandated
7. Hopefully more affordable and accessible, good public transport
8. Hopefully more bike infrastructure and less car dominance
9. Hopefully more people using active transport so will need to be supported by better infrastructure and safety.
10. Hopefully there be a realisation that public transport is vitally important for the health of the planet
11. Hoping more people will ride or walk to places, catch public transport and banning oversized vehicles like RAMs etc.
12. I am hopeful public transportation will increase significantly and be the everyday. We need much more in the way of public transportation, it needs to be faster, more frequent, FREE and ongoing. Bus drivers wages should be increased and all transportation should be free, running passed midnight including to the outer suburbs, and more than once an hour on a Sunday. Everybody deserves access to the city, and not just those who live there. All of this should be legislation. The city should also be much more walkable with a emphasis on smooth pathways for those with mobility aids.
13. I hope accessibility will be better, advanced and applied everywhere to a satisfactory level. Many more people will likely get sick and unwell due to pollution and other factors and their needs would hopefully be considered and accommodated for. In terms of transport, I am hoping more public transport would be utilised along with personal environmentally friendly transport but I can't foresee big changes unless humanity bans petrol in some way or the prices of fuel are too high. Government should apply adequate limitations and legislations to promote green transport, it won't come from people
14. I hope that there is less focus on car driving, especially in the CBD + greater Adelaide. I hope that we have efficient trams and trains + way better bike lanes and paths. This would not only clear up our roads, but benefit the society in regard to health and mental wellbeing too. Perhaps we can provide help to those who can't afford an e-bike etc. Also making transport more accessible. Again I have doubts about progress in this direction, but some hope!
15. I hope we rely less on cars by then.
16. I'll like to see more expansion of public transport and for our public transport fleet to be fully accessible. There is a chance we could get there with bipartisan commitment, but in reality we'll probably continue to focus our planning based on the average user being a single passenger combustion engine car on a long commute because there's no appetite for change.
17. I think the demand for public transport will far outweigh the infrastructure capable of handling the traffic
18. I think we will have replaced ICE congestion with EV congestion
19. It would be nice to have improved cycling infrastructure, rail systems
20. More bike lanes and public transport options and less cars in the CBD

21. More electric cars
22. More people will be using public transport and micromobility, cars will be limited to at most 30km/h in the CBD, perhaps even restricting the CBD to electric vehicles only to prevent localised pollution, both noise and air. Significantly more cycling and micromobility infrastructure and lanes. Most CBD streets will be reduced to a single lane of cars each way to make room for cycling lanes
23. more public transport
24. More public transport
25. Much the same as now
26. Roll out electric buses!!! More frequent services would be great as well as connections between areas eg north east to north west without having to connect to city. Cheaper market for EVs. Advertising for e-bikes and scooters and public/mainstream advertising promoting public transport as more eco-friendly than driving cars. Advertising supporting public transport in general!!
27. Safer infrastructure for cyclists! As the world (and particularly economically advantaged societies) HOPEFULLY begin to transition away from the reliance on private, fossil fuel powered vehicles, there needs to be a system change (particularly for infrastructure) to accommodate alternative sustainable modes of transport.
28. Streets will be quieter because of more electric vehicles. Anticipate that traffic will be worse in Adelaide because state government doesn't prioritise public transport, so the best option to get into the city will be cars. Adelaide will continue to be a car reliant place until local and state government show courage.
29. There will be more bike lanes and pedestrian facilities. Speed limits will be lower. Public transport will be better and cheaper.
30. Things MUST change before 2030 or we risk serious food and water security issues. Government needs to ensure supermarket prices reflect what the grower is paid, rather than steak being sold for \$28-\$40/kg when the grower is receiving \$2.87 liveweight and \$5.30 dressed weight. This is a ridiculous situation, the blame for which is directly in the hands of the Government. Supermarkets are making millions while farmers are starving or selling to developers because they do not qualify for the aged pension due to inflated value of their farmland. About time this was addressed!
31. Unfortunately I think things will be much the same, despite my preference for increased investment in public and active transport. Car culture in Adelaide is too strong. New rules and legislation must be led by bold and brave policy that reduces car use and promotes more sustainable travel.
32. We need to reduce individual car use and promote shared public transport.

**Q13 How do you think society will have changed in 2030, when you think about climate resilience? Will there be new rules or legislation? How will community preferences have changed, or will things be much the same as now?**

1. Again, legislation needs to be stronger. The concept of climate resilience is not yet a household dinner table conversation topic (but climate change is). More public education is needed in this area.
2. Already mentioned some but there will likely be increase in infectious diseases due to climate crisis that will lead to increased need for effective ventilation
3. Buildings and urban spaces must be made with climate resilience in mind. Until businesses and governments start taking climate change seriously, the very least that can be done is for spaces to be legislated to have climate resilience in place so the people are safe(r).
4. By turning the joinery into a commercial space not a community one, our community will struggle to face adversities arising from the climate crisis. Don't charge the community commercial prices for spaces.
5. Carbon footprints will be considered in everything we do.
6. Climate resilience breaking down due to lack of community support networks and social cohesion. Worse community networks due to climate induced heatwaves and climate caused cost of living increases. Poor mental health due to these reasons across the community. Reduced effectiveness to implement climate resilience and other necessary changes by the community and advocates due to reduced social cohesion and increased cost of living
7. Climate resilience will be led by local government, with the onus on property owners to prepare
8. Community will have to change as the climate crisis affects our day lives. People will not be moving outside of their local areas as much so there will be a requirement for this to be easily reached by public transport.
9. Depends on who's in power and whether they will listen to the people and the environment.
10. Electric vehicles will be mandated
11. Hopefully more climate change proofed
12. I believe we will have to have new legislation to protect the climate.
13. I expect we'll be stuck in largely the same cycles. It's only two election cycles. Without a real disaster people aren't going to be prepared to accept anything more than incremental change, and that's fiddling in the margins that won't prevent the worst effects of a change of 3Â° or more. We will all be very concerned and ready to take action the second it is too late.
14. I hope so.
15. Increased focus on mental health as an aspect of climate resilience; would be nice to have stronger legislation to penalise polluters
16. I think it will be hotter and more extreme as we haven't done enough to prevent it. I hope by 2030, the climate change denialists will be minimal
17. It will be hotter with more rain and storms, so the outdoors will need to provide shelter and green spaces, plenty of established trees and shade.
18. I would hope that people form tighter communities that provide sense of comfort, working together and not being alone
19. Lawful regulations and taxing the ultra rich, less tax breaks for the ultra wealthy + landlords
20. Local food, reduced consumption and more reuse and recycling
21. More greening and protests
22. More legislation to control emissions, waste etc
23. Much the same, if not worse
24. Parts of the city will be uninhabitable for portions of the year. Freak weather events will be more common and issues like smoke inhalation will inhibit time spent outside
25. People are already ahead of the government in understanding the results of climate change - but while the government continues to bring in more and more people and blather on about the need

for more and more houses our precious farmland is being carved up due to the inflated prices as a direct result and because the farmers can no longer make a fair living due to supermarkets, not farmers, setting the prices. How did this happen? Because the Government is too busy looking to their own political seats rather than the reality of climate change as it is impacting our farmers. This must change

26. SAGE focuses a lot about climate action and bringing young and old people together to talk about climate and each other perspectives really helps people spread the message and idea of what actually can be done person to person. While also what we can do to make bigger brands and governments change their decisions on climate issues.
27. Small changed
28. South Australia is leading in regard to renewable energy in Australia, but with climate change being an extreme worry on my mind, we need to do much more - and our government needs to strongly steer away from natural gas, we need our private and non-private sectors to NOT rely on investments within the fossil fuel industry - this is not sustainable nor democratic! We need to acknowledge the extremely hard road ahead, and work towards lowering the effects from climate change. I want to be able to safely know that I can raise a child here in the future, right now I don't know if I will be able.
29. Temperatures will be a lot harsher, people will be seeking shade when walking and travelling through the city. New developments will be required to have a number of trees planted on and around their buildings.
30. The community will be on the edge because of forecasted power outages in summer due to high heat. I don't think there will be any new legislation to protect the common people. Hopefully more people will demand more climate resilient homes, but doubtful as government and lobby groups will brand them as just higher costs.
31. The joinery helps people build climate resilience
32. things will be much, much worse
33. Unsure how aware we even are on climate change let alone climate resilience

**Q14 How do you think society will have changed in 2030, when you think about Circular Economy? Will there be new rules or legislation? How will community preferences have changed, or will things be much the same as now?**

1. Better
2. Circular economy needs to start with fair prices being guaranteed the grower, rather than the grower receiving a fraction of the prices being charged by the supermarkets. Too many middlemen, too few farmers able to live sustainably from land overvalued and taxed on its potential sale price" rather than what can be earned from growing food/crops/livestock for food on that land. This can only result in loss of all our good farmland to housing ..... where is the common sense in this? What is the government thinking? Wine growers receive far more consideration than farmers.... Why?"
3. circular economy? shut the up. there is no circular economy under capitalism
4. Circular economy sounds great, we need to steer away from producing goods and services that don't last and get turned into waste quickly. We need to think about our recycling system in SA, how can our resources be used to their best ability. I would hope that the new development is aiming to be made from recycled/re-used materials. How much of the development will be made from brand new resources? Can this be lowered? We have so many materials in waste that could be used just as good!

5. Comm7nittbpreferences will be towards more reusability and less disposable packaging. There will be more repair facilities.
6. Could be greater awareness of how to manage resources in a circular fashion. Hopefully there will new industries in SA that support the use of recycled materials which then create manufacturing jobs locally.
7. Electric vehicles will be mandated
8. Governments captured by private interest have no interest in changing our economic model
9. Greater re-use, recycling, use of local products
10. I am hoping there will be a positive change by then. We are overflowing with consumptionism and not-needed goods. I can only hope we will get better!
11. I hope that change happens that fast but I don't hold my breath.
12. Increased demand for community based repair and craft industry. Further reliance on imported manufacturing, damaging economy and community adaptability. Loss of skills due to lack of local manufacturing. Increasing costs due to fragile supply chain and lack of reuse/repair/recycling chain
13. I think circular economy will be far better understood and a part of everyday life. We have too many new things, we do not need more new things. we need spaces like The Joinery which teach and allow spaces for circular economy but also like, why take down a meaningful space which creates so much good in the community just to build something new unnecessarily. We need to focus on uplifting community spaces rather than building new spaces. People are seeing the importance of circular economy now, so let's take that seriously!
14. It's inevitable. Earth is a closed system, we only have so much raw material to work with.
15. Legal incentives against food waste - penalise grocery stores that waste more than a certain portion of food. Disposable food must go to food banks, ozharvest etc. Legislation also to be introduced for fashion chains that have recycling programs (eg H&M) to show data on what portion of materials actually get recycled. Introduce advertising campaigns that educate public on recycling AS A LAST RESORT and prioritising REFUSING, REDUCING, REUSING.
16. more emphasis on sharing economies
17. More extended producer responsibility/product stewardship schemes, would be nice to have mandated material use (e.g. XX% of material recycled)
18. Much the same as now
19. N/a
20. Similar, but I am unsure
21. The circular economy concept is improving. There is often strong commentary around the large carbon and landfill cost of disposable fashion. Any new legislation should build on this.
22. The joinery is a circular economy. It's beautiful. We can't lose it.
23. Unsure
24. Unsure. There will be more older people so their needs and interests will need to be considered, and how they access such spaces.
25. Well hopefully we will have woken up to the fact that we can't just carry on going the way we're going!
26. With the removal of cash nigh, the circular economy will be impossible.
27. Yes - right to repair protected by law and inbuilt obsolescence banned

**Q15: How do you think society will have changed in 2030, when you think about Sustainability education and culture? Will there be new rules or legislation? How will community preferences have changed, or will things be much the same as now**

1. As above
2. As mentioned before spaces like SAGE are extremely important for people like me who are worried about the future + struggling in the way society is structured at the moment. We need to think about equity within poorer/richer communities in regard to this education and community culture - how can more working class/poorer communities be included more? Often these people in lower classes, have less access to this education and will also be effected the most by climate change effects and societal/economic collapse.
3. Community is currently opposed to high rise developments in the CBD and will be far more opposed by 2030. The young people of today are largely furious at their elders for the world we are being left with.
4. Culture will be much more focused on sustainability.
5. Difficult to know
6. Electric vehicles will be mandated
7. Greater demand for sustainability education and support for communities to change and adapt
8. Growing understanding of the damage done to the environment and our future due to corporate interests, and who is responsible. Lack of applicable skills from formal education to improve the economy and community resilience. Wide appreciation for the damage done to aboriginal cultures due to unf
9. hopefully it has improved and becomes a significant part of school curriculum, it can be used as a great gateway into science and mathematics. Hopefully building standards improve, triple glazing should become standard, or at least double glazing. And better insulation requirements
10. Hopefully we will all live more responsibly and ethically, buying fewer things, producing less waste, no single use plastics, better understanding of impacts on climate change.
11. Hope it improves
12. I am optimistic about youth and the younger generations pushing for greater emphasis on sustainability education, and by the time they get to vote we can make it count.
13. I doubt it. Social media misinformation has completely poisoned broader community sentiment about change in general and any change related to culture and education in particular. Look at the response to simple urban planning suggestions like 15 minute cities. We're in trouble.
14. If grass roots organisations face a valley of death in available spaces the community will be forced to dissipate and disband. To remove a space and not provide an interim location will be catastrophic and make the skatepark fiasco pale in comparison. The needs to be a continuity of services while the current site is under construction.
15. If we keep destroying spaces which foster sustainability education like the joinery we won't progress.
16. I hope much more use of circular economy, less buying new clothes or products and the life span of products lengthen.
17. I think it's becoming more and more important to teach, so hopefully it'll be more prevalent and in every school
18. I think sustainability will be in everyone's head much more, it will be an everyday understanding as we develop a more environmentally conscious community. Part of allowing an environmentally conscious community is keeping spaces which teach sustainability like The Joinery. We want these spaces in our community and they do and will lead to a better community as a whole
19. It must change. It is changing now. Joinery is/was a good hub for these changes to take place, for information to be spread, for connection and positive impact
20. Much greater public awareness and drive for sustainability
21. Much the same as now



22. My god I hope we're more aware. We need to treat the climate crisis with the same energy we treated covid - mass awareness and education campaigns. Climate change will be taught in schools and educational content promoted on social media
23. People will be more aware and willing to action. Community will want action on climate change, they already do. It's just government and businesses not doing enough.
24. Sustainability will continue to infiltrate curricula, though not in the radical way needed
25. The divide between rich and poor is now a yawning chasm. Unless the government smartens up and delivers a more level playing field by valuing farmers and ensuring they can earn a decent honest living (without having to sell the farm that is) we will be in an even more parlous state within the next decade. Change is needed urgently as farmers this year spend all their savings to keep animals alive due to lack of rain in most of South Australia. The only way they can 'retire' is to sell the farm - what stupidity is this? Few farmers qualify for the aged pension due to their land value.
26. The joinery is Adelaide's hope.
27. This is why we need places like the Joinery - to help educate and spread the word about the best ways to care for yourself in a rapidly changing world.
28. Unsure
29. we will only be more aware of the devastating effects of climate change

**Q16 How do you think your needs will have changed in ten years' time when you think about the following ideas? 1: Energy, 2: Transport and access, 3: Climate resilience, 4 Circular economy and 5: Sustainability education and culture.**

1. 1. Access to cooling at a cheap price. 2. More public transport 3. Huge revegetation projects. 4. there is no circular economy under capitalism only an extractive economy. 5. divestment from capitalism
2. 1) Electricity has to be 100% renewable going forward, so we should be prioritising all electric buildings 2) no real change to person needs although I'd want better tram access throughout the city 3) would want to be comfortable in buildings as summers will just be hotter in Adelaide 4) no real change in personal need 5) no change in personal need
3. 1. Will need access to cool places and transport options, will consider more carefully how I travel. 2 will continue to use public transport and e-bike, hoping to have an e scooter. 3 will want to live in a space that has considered energy use and planned for increased temperatures. 4 buy and use less. 5 consider climate impacts of decisions, sharing this with the next generations.
4. 70% of people will be disabled at some point of their life. I am currently disabled and could easily image myself being more so. We need to focus on accessibility in our shared spaces. Everyone deserves to have community space like The Joinery. We need to focus on Sustainability focused, free spaces like The Joinery. Accessibility is for everyone including the disabled, the low-income, etc. If a space costs too much for someone on job seeker, it is not accessible.
5. Electric vehicles will be mandated
6. I am hoping that my needs will be met by good and green solutions. My current needs for energy are very low. I do not need accessible venues but want and need them for others. I need to feel more climate resilient. Climate change is hugely affecting my overall health and wellbeing. I am already participating in circular economy. I am constantly educating myself on sustainability and actively participating in culture.
7. I hope it gets better not worse
8. In ten years I want to be entirely off of coal and gas - so much greater accessibility of electric vehicles and green energy sources at home and in public. At our current climate trajectory climate education in mainstream media should be VERY commonplace, ideally govt sponsored. We will need to have established circular economies across multiple industries esp fashion and food. As for climate resilience I am hoping at least some talk at a govt level will involve basic income, due to amplified impact of climate

crisis on entire continent and esp poorer communities. This can be partially paid for by fossil fuel companies

9. I will have children by then so my needs will be adapted to suit that lifestyle.
10. I will need better public transport. I will need more support with repairs.
11. I will still need community connections facilitated by financially accessible spaces.
12. I will still need the joinery
13. Less energy I hope, Better transport, more sustainability
14. Lower use of resources
15. More sharing, more community connection, more space for communities to act together
16. Much the same as now
17. My answer for all 5 is that I don't think my needs will change, but I also don't think they will be met.
18. My needs will hopefully not change too much but I'm on the older side.
19. Summer becoming less active months, more activities will have to be done when it's cooler - early morning or late at night. The city will need much more transport.
20. This depends on what our situation is like in ten years, if we have severe droughts or floods or heat waves - then maybe my health and wellbeing/safety will be a priority then. So this question frustrates me a bit actually, at university I study the effects of climate change and globalisation - I know exactly what is coming for my future, so what we need to be thinking about NOW is CHANGE. Change to our energy sources, our resource distribution and production. We need more circular economy methods NOW, and climate resilience in communities (such as ready-safe communities like the 72hr hubs) - to prepare us for the future ahead. Education needs to happen now too, we need education to be more accessible now. So yes my needs will probably change, but I have no clue what our world will look like in 10 years - Adelaide might be ok by then, but places like the NT and countries near the equator won't be - we are already seeing extreme weather events. We need to act now.
21. Transport and access will be key as successive State Governments continue to approve massive housing estates outside of metropolitan Adelaide, yet do not provide new public transport infrastructure to support them. Through more cars on the road, this means increased energy use, big negative impacts on climate resilience and will negate sustainability education and culture.
22. We could sell the farm, waste a lifetime of experience and skill in farming and just sit and watch developers turn our prime farm land into tiny boxes built to the lowest building standard possible (as in Mount Barker) because the newcomers all round us receive the full pension despite not having ever paid taxes in this country. Where is the sense of this? Where is the reward of paying taxes to a now hideous extent for over 60 years? Some don't even qualify for 'rate capping' as their land is comprised of several blocks and one needs to live on the block which has been revalued by 13% or more to receive 'rate capping. About time all this was reviewed because farmers don't work from 9 to 5 - they work and are 'on call' 24/7."
23. While we live in such a precarious position socially, economically and environmentally, it is hard to plan and predict the future.

## Sustainability goals

**Q17. If you were in charge of creating this development, which sustainability goals do you think are the most important?**

Category	Total
Education and storytelling - The decisions, opportunities, and lessons in developing this sustainable precinct, and the sustainability performance of the precinct are shared with community and industry.	16
Design for transport beyond cars - More people travel to/from Tapangka by walking, cycling, micromobility or public transport than similar precincts.	16
Biodiversity Enhancement - Important plant and animal species are used to guide the landscaping and design of the precinct, and this is a priority.	11
Passive thermal comfort - The urban heat level is reduced at Tapangka and the indoor comfort is increased via passive sources such as natural light and breeze.	10
Highly energy efficient - The precinct uses significantly less energy than similar precincts.	9
Resource Recovery - Day-to-day waste produced at Tapangka (once it is complete) is kept out of landfills.	5
Lower embodied carbon in construction - The carbon emitted during construction of the precinct is lower than similar precincts	4

**Q18. On a scale of 1-10, how important is sustainability to you when choosing somewhere to live?**

Category	Total
1 not likely	-
2	-
3	-
4	-
5	1
6	-
7	1
8	3
9	3
10 - very likely	31

## Ideas and comments

### Q19 Anything you wish to comment on that hasn't been addressed

1. All of things mentioned on the previous page are important - not just two!! I hope that you understand how important the joinery is to the very people that you are trying to pitch this development to. Please don't just greenwash everything - make this COUNT!
2. Do not close down The Joinery. Spaces need to be free or low priced, always affordable enough for those on Job Seeker. Community spaces always
3. Do not gentrify this area.
4. Don't destroy our Joinery. This place is so important.
5. Don't get rid of the joinery thanks
6. How will you ensure existing community groups will not lose their operations and spaces (ie. SAGE and the bike shed at the joinery?)
7. I am noticing a camp and homeless people settlement next to the joinery on Franklin at present. I would like the building to consider and accommodate outdoor toilets and showers open 24/7. I want current initiatives happening at the joinery to keep on happening. They bring community together and help foster hope and connection. Without a well designed community space for gatherings, the whole innovation and spending money and resources is aimless
8. I do not want this redevelopment on the site in which the community building, The Joinery, already sits. The Joinery is a unique and accessible community space that many have worked hard to grow. It is not something which can be picked up and moved for buildings that only wealthy people will be able to access. Please consider another site which will not destroy the huge amounts of hard work and community which exists already. Please consider another site and do not negatively impact the safe space for vulnerable people that already exists here.
9. I feel like the issues around the loss of existing use at the site was glossed over.
10. I think I've addressed my points - I'll just reiterate that I am worried and sad that we will be losing a low-cost, accessible, grassroots community space like many other similar spaces that have been lost over the years. Please see what the Joinery is providing at the moment, and please create low cost community spaces - please think about accessibility for all in this new development and please work in helping the homeless populations who may be losing a space they call home.
11. I think the project should target Passivehaus certification to really address climate resiliency and occupant thermal comfort and wellbeing
12. It is critical that accessible community spaces (Physically, financially) exist to enable people to meet and build community relationships to enable harmonious co-living.
13. It's important to keep spaces available for community groups and activities like The Joinery provides, free or for low cost.
14. Keep the space accessible as it is now as a Joinery
15. Pedestrian connections to the Central Market should be as strong as possible.
16. Please keep the community bike hub, it is such a fantastic resource
17. Retaining a home for the Conservation Council and the groups it supports is crucial to this being an equitable development
18. Retain Tesla superchargers on site
19. Safe building design, use of safe materials, physical safety considerations for women.
20. SAVE THE JOINERY
21. Spaces for grassroots community groups to meet are essential for the health and wellbeing of people and would add great value to the precinct.
22. Stop demolishing buildings that have life in them
23. The community impacts of this development are effectively ignored in this consultation, including the direct concerns of the current site users. There was only one day to prepare for the in person consultation, not enough. All the questions in this survey are highly leading and

- do not allow for an accurate representation of community needs. The sustainability and indigenous culture benefits of this development are superficial and insulting to the environmental and aboriginal communities impacted by the development
24. The insane pursuit of population growth and 'greenfields' rezoning for housing development are the most unsustainable and environmentally destructive of any government in my lifetime. To continue to pursue these population growth policies while talking about 'sustainable development' is nonsensical. The entire State is in the grip of the most severe drought I can recall in my lifetime. Thousands of animals have died in the Mount Lofty Ranges and Fleurieu (and S-East) due to lack of rainfall and pasture growth. The State is running out of hay (even old hay) and most farmers have exhausted
  25. The Joinery embodies all things sustainability, sufficiency, and community. Please save The Joinery!
  26. The joinery is a vital community meeting space because it is financially accessible to community groups. Charging community groups commercial prices is damaging to the community.
  27. The Joinery should have a place in this precinct
  28. The only way this project will be respected and approved by the community is if the joinery community space is seriously considering the development. This space has provided so much to the Adelaide community. It will be devastating to see it go. Public spaces that the public actually uses are in short dire. The joinery is one of 3 public spaces that is being used by the wider community for educational activities, nurturing the public and providing a diverse space for all.
  29. there is currently a low-cost, accessible community space called The Joinery at the site and the community strongly opposes its removal. The Kaurna people that I know personally all oppose this development. If we want a sustainable city, new high rise developments are not the answer.
  30. We need to keep this as a community space with low cost rents for offices and meetings of groups of all shapes and sizes.

**Q20 To help us improve the online engagement experience for future projects, please tell us how you found using Social Pinpoint to provide your feedback.**

1. Easy and enjoyable, and thought-provoking.
2. good, thoughtful and interesting questions
3. I feel good that I was able to provide my thoughts and feedback, but I feel a sense of doubt in any of my points being put into consideration with the new development. How am I to know how everyone's feedback has been considered? I'd also like to make sure that surveys like this are spread to many communities within the area, as many as possible.
4. I heard about it through Conservation SA
5. I just want to reiterate the need for continuous access to community space for the groups that already use the location. I would like to see true engagement with the Kaurna people from housing, services to free meeting spaces
6. It deleted all my survey answers and I had to start again. Very frustrating
7. It was fine.
8. It was good but I want an option to save and continue if possible
9. Larger text boxes would be beneficial, rather than a single line where you can only see approx. 10 words at a time
10. Not too bad
11. QR code on a telephone pole.
12. Restricting

13. Social media
14. Social Pinpoint is fine, but it is only possible to answer the questions given, rather than make any pertinent and relevant comment on what is needed to bring S.A. back on track with regard to food and water security and living more sustainably. The government could not be further out of step with the situation on the land, the abysmal prices being paid for livestock in comparison with supermarket retail prices and the overblown land values pushing farmers out of their homes. New arrivals receive full aged pension benefits; many old Aussie farmers do not qualify due to the inflated land value
15. Via petition to save the joinery
16. Was alright
17. would be great if the written responses weren't in one line. Makes it hard to edit. But generally all good

## Full written submissions

### Submission 1 email (local resident)

The main feedback is this:

- high to low density residential developments might be tagged “affordable” to buy. But once “strata “ or “ community plan” titling occurs they become unaffordable to live in them. Plus on top house insurance, gas, electricity etc.

Even in Torrens Title there can be community fees associated with them for common areas, parks eg the old ACC site n Halifax St development.

- too many empty shops, retail in the CBD. No need for more. This development is close to the Central Market. No need for more retail, more coffee shops. 5 x 5 commercial leases are a recipe for disaster for business owners.

- build form needs to become and low maintenance. Eg look at ERGO development in Sturt St. it needs painting already. Not good for owners.

- Adelaide still a car city. Old people need cars. More apartments with no car discards is not good.

- ACC council rates too expensive. Our small 2Br community titled place has rates now at \$2,500pa ridiculous. Plus community fees at \$1,400 pa ridiculous. Plus house insurance at \$1,000 ridiculous.

- This development will have similar fees for owner occupiers n fact most ch higher strata fees. At present for 1br strata apartment fees can be \$500pq plus plus....

- due to insecure casual type employment scenarios these days most people still need cars to get to their 1,2 or 3 jobs per week they do.

- to attract more owner occupiers to the city you need to reduce living costs eg council rates and strata fees. Offer space in the units and offer at least one car space. Public transport is not always easy to use nor push bikes in different weather conditions.

- what can be done is incorporate Chinese style shop houses.

Shops/retail with a residence for purchase. So prospective business owners can own title to it run a business and live at the premises. This is safer option than entering 5 by 5 commercial leases.

- commercial lease type premises should not be included.

Regards

Name withheld



**Submission 2 – Adelaide Community Bicycle Workshop**

We welcome that, as the flyer says, the project will be a mixed use neighbourhood, and a sustainable development that champions climate resilience, sustainable transport, reduced carbon emissions, circular economy and sustainability.

The site currently contains provision for community use, and is used by a range of community organisations and not for profits, who rent space in The Joinery, from its current owner, Adelaide City Council. There is also a much liked community garden on site, run by Common Ground / Housing Choices,

These organisations have been present in the area for around a decade, and have become part of the neighbourhood and part of Adelaide CBD. We would like to see them continue to remain active, and eventually become part of the Tapangka project.

Established community organisations form a major component of a neighbourhood.

Adelaide Community Bicycle Workshop is a small volunteer run organisation / registered charity / not for profit. We are an established tenant already on site, at The Joinery. We have been present since The Joinery opened in 2015.

We note that Tapangka aims to feature sustainable transport. Cycling is an important component of this. For 10 years our volunteers have provided a range of services and support to cyclists in Adelaide CBD, at low cost, to help cyclists on low income (and others) keep their bikes on the road. These include repairs and servicing, also sale of recycled bicycles, and provision of free bicycles to people in hardship in the CBD and elsewhere, referred to us by welfare organisations.

We rely entirely on donations from the public. Currently we recycle 1400-1500 bicycles a year on the site, and receive estimated 2000-3000 visitors annually. This social enterprise has developed a sustainable funding model and receives no government support or grants.

We would be keen to remain on the site and also eventually become part of Tapangka. With our focus on circular economy and sustainable transport and reducing carbon emissions- we feel we would be a good fit.

We have an established track record of assisting people on low income / in affordable housing, by supplying either free bikes (on receipt of a referral from a recognised welfare agency), and also affordable secondhand bikes that have been checked and serviced, plus after sales support.



Our volunteers also frequently get asked to assist with repairs-being volunteer based and with social aims we can do this at low cost. Many people on limited income do not have the means to afford repairs at other bike businesses; in addition the bikes are often poorly maintained, and other bike shops are reluctant to take them on. Thus Our presence on site will enable people to continue to use their bikes for transport.

The workshop has considerable support in the community, from our clients, from the welfare organisations we work with, and from donors who wish their disused bikes to be recycled not go to scrap.

The workshops requirements are flexible and minimal. For 10 years we have worked outdoors at the old bus station, on a compound approx 150 square meters of disused car park and pavement space, leased from Conservation Council. The set up is based on workshops and storage in 3 shipping containers, and thus is easy to re locate and quick to pack up / re open . this has enabled us to cope with 2 previous re locations, both with minimal interruption to service provided to people in need.

Community bicycle workshop are a tried and tested type of social enterprise. There are similar workshops in Melbourne and Sydney and in a number of European cities. Each has its own focus, however they share a common approach of assisting the community with transport needs and bike education, reliance on volunteers, using donations of unwanted bikes and bike parts, and developing expertise in bike repair and servicing to put these back into service.

We note that in the RenewalSA re development at Bowden, another similar social enterprise, BikeKitchen, has become an integral part of the re development.

We are keen to remain on site as the location works well, for us and for our clients, and is well known among the communities and social welfare organisations who refer clients to us. Its central location near Central Market also works well for bike donors. In the last 10 years our volunteers have put considerable time and effort into activating and developing the site.

We came on board The Joinery when it opened as a shared community space in 2015, and we are one of the few original tenants still remaining.

At this stage we are keen to engage with RenewalSA, to discuss how we can continue our work during the re development, and eventually contribute to the success of the Tapangka project.

Secretary, Adelaide Community Bicycle Workshop

**Name Withheld**

The Bike Workshop is operated by the registered charity Bikes for Refugees SA Incorporated - ABN 20 663 461 735 -- registered with the Australian Charities and Not for Profits Commission.

## Submission 3 – Community Alliance SA Inc. (CASA)

Community Alliance SA Inc

Engaging for Reform



21 September 2024

Renewal SA Engagement Team

Dear Team

**Re: Proposed re-development of former bus depot site in Franklin Street - Tapangka**

Community Alliance SA (CASA) represent 35 community organisations in SA and our core focus is to put the people back into the planning process.

We are writing to express our concern that the current users and tenants of the site of the former bus depot in Franklin Street, the Conservation Council and its associated groups, have not been provided with sufficient time to consult with their constituents about a proposed re-development of this site in order to make representations to the planning process.

We request an extension of time of one month for the Conservation Council to prepare its response to this proposal.

It is a major concern to many community groups that the Conservation Council and its member groups may lose access to this site to which they have contributed many years of environmental and social work, thus building up social capital in this part of the city centre.

The proposed development includes a 26 storey west tower (with four storeys of commercial space, an eight storey 208 room hotel, 196 "build to rent" apartments on the top 14 floors) and an 18 storey east tower with 196 apartments for sale and rent and a central "signature building". This signature building is to have a 6 Green Star rating and to be carbon neutral when operating. This is very good, as few buildings in Australia have this rating.

There is an excellent opportunity for the Conservation Council with its various constituent groups to be provided with some space in this iconic signature building or in the new development. Over 300 groups currently make use of The Joinery community centre run by the Conservation Council on this site. A bike repair shop, a community garden and a café open to the public are just some of the facilities on this site. Run by volunteers, these services would add prestige, vitality and sustainability to the proposed development, while also conserving and promoting social capital.

We request that some of the services currently offered by the Conservation Council and The Joinery continue to be hosted at this site or that the existing tenancies be permitted to

continue at low cost in the spirit of the “iconic building” 6 Green Star rating and stated intentions to provide “a place of learning, entertainment, culture and community” as already exists at this site. The Conservation Council is already delivering a place of learning, entertainment, culture and community and these services will add much social and environmental capital to the proposed development.

We look forward to your response.

Yours sincerely

President Community Alliance SA

**Name withheld**

## Link to online engagement

<https://renewalsa.mysocialpinpoint.com/tapangka-on-franklin>

## Link to the drop-in session display panels

[Tapangka on Franklin Engagement 2024 About the project panels](#)

[Tapangka on Franklin Engagement 2024 Sustainability panels](#)

[Tapangka on Franklin Engagement 2024 About Renewal SA panels](#)