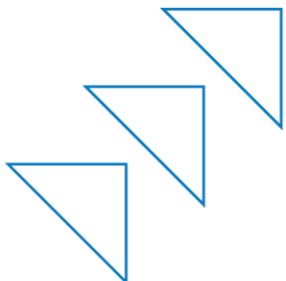


# PROSPECT DEVELOPMENT

30 November 2022

## COMMUNITY ENGAGEMENT REPORT - STEP 2

Major Projects & Pipeline



# Contents

<b>Contents.....</b>	<b>2</b>
<b>Executive Summary .....</b>	<b>3</b>
Next Steps .....	4
<b>Report Purpose .....</b>	<b>6</b>
<b>Project Background .....</b>	<b>6</b>
<b>Prospect Time – Key Dates.....</b>	<b>8</b>
<b>Engagement.....</b>	<b>9</b>
Engagement Background.....	9
Key Stakeholder Engagement.....	9
Community Engagement.....	9
Engagement Outcomes.....	11
Engagement Participation .....	11
Engagement Activity .....	11
Community Drop-in Sessions.....	11
Online Engagement Social Pinpoint .....	19
Survey Responses .....	20
Engaging Young People – Step 2 Rosary Primary School students .....	26
Written Submissions .....	30
Key Engagement Findings .....	32
<b>Conclusions and recommendations .....</b>	<b>33</b>
<b>Next Steps.....</b>	<b>34</b>
Appendices List.....	35

## Executive Summary

On behalf of the State Government Renewal SA purchased the former Kaufland-owned site at 250B Churchill Road, Prospect in November 2020.

Renewal SA delivering a high-quality master-planned residential development project on the 2.36-hectare site, just seven kms and nine minutes train trip from Adelaide's CBD.



As master developer, Renewal SA will partner with trusted and experienced private developers and builders to create new homes (comprising townhouses and apartments) with a significant focus on affordable housing. Renewal SA will deliver high-quality public open space and extensive tree planting to provide tree canopy cover along with improved connections and access to existing public transport and pedestrian/cycling links.

The State Government had not undertaken any Community Engagement activities regarding the Prospect site prior to its purchase.

Community Engagement for the planning of the public open space of the Prospect development was a two-step process:

- **Step 1 (completed)** – to enable Renewal SA to understand the community's current and desired use of public open space (including the main park, connections with the Islington railway station and pedestrian/cycle paths) including feedback from Rosary Primary School Children's University students' workshop. Feedback received during Step 1 helped to inform the development of the public open space concept design options for the next step of the stakeholder and community engagement, and
- **Step 2 (completed)** – by Renewal SA, to provide the community with a further opportunity to comment on the public open space design options during August 2022 with feedback helping to guide the finalisation of the public open space design for the Prospect development.

This Engagement Report covers Step 2 of the Community Engagement, identifying the community's preference for the three landscape design options for the public open space reserve areas as well as general feedback from community members and local students from Rosary Primary School, Prospect. Renewal SA also liaised with the Kaurna Yerta Aboriginal Corporation (KYAC).

**Step 1** Community Engagement occurred from 27 April – 30 May 2022, with community members invited to participate online through Social Pinpoint, and encouraged to view the 'Ideas Wall', add comments about 'what makes a great public open space?', see others' feedback and ideas, vote to   comments posted and complete an online survey about the proposed Central Reserve and open space. Feedback received revealed that respondents supported or strongly supported the proposed reserve and open space, citing reasons for their response based on concerns about lack of public open space in Prospect and in particular, within new apartment and townhouse developments in the area.

**Step 2** Community Engagement occurred from 12 August – 31 August 2022 with community members invited to attend two Community Drop-in sessions on 17 & 20 August and also encouraged to participate online via Social Pinpoint to provide feedback on the three landscape design options for the Central Reserve, as well as the two smaller reserves and the proposed plantings.

In summary, over the engagement period a total of 35 participants and 7 Children's University school students were engaged across the feedback methods as follows:

- 19 participants attended the two Community Drop-In sessions casting 30 voting dots for their preferred design option for the Central Reserve and providing 33 post-it note comments
- Over 200 visits to the online engagement platform Social Pinpoint with 14 surveys submitted
- Seven Rosary Primary school students participated in a second workshop with Renewal SA's appointed Landscape Architect
- Two emails received, and
- one hardcopy submission received at the Community Drop-in session

## Engagement Feedback

Overall, community feedback received across the engagement methods indicated support for the Central Reserve designs and public open space areas within the Prospect development.

Feedback revealed:

- Favorable response to more public open space for the area, the Central Reserve lawn area and the Circular lawn
- Features common to all three design options for the Central Reserve was supported
- Strong support for both Discovery/Nature Play and Active space design options and less for the Passive/ Reflective design aspects
- Majority preference for Active space by the school students
- Supportive of the neighbourhood food bowl, indigenous pathway features, family focused activities, suggested trees and plantings (with concern about ongoing care and maintenance)
- Lighting and parking raised and concern about the location for basketball/netball court/hoop being too close to houses
- Other suggestions included toilets, access for food trucks, café, dog park and cycle linkages
- Revegetation and lighting of Regency Rd embankment (DIT) also suggested (noting this is outside of the Prospect development boundary and is not in Renewal SA's ownership)

Design considerations based on the feedback:

- Central Reserve be a hybrid of options 2 & 3 incorporating nature play, the circular lawn area and exercise equipment
- Basketball/netball hoop requires further consideration
- Link Reserve reflect the elements suggested in the design with inclusion of communal herb garden

## Next Steps

All feedback collected from Step 2 Community Engagement will help finalise the public open space design (refer Appendix 4 revised plans) for the Prospect development in conjunction with the City of Prospect. The final plan is subject to Council approval.

Feedback received which falls outside the scope of the Prospect Development area has been noted and provided to the relevant government department/agency – City of Prospect and Department of Infrastructure and Transport. Renewal SA will actively follow up with both stakeholders given the importance of these interfaces to the Prospect development.



Diagram 1: Prospect development site

## Report Purpose

This Engagement Report by Renewal SA outlines the process and results of Step 2 of the engagement for the development site at 250B Churchill Road, Prospect (also referred to as the Prospect development). Step 2 community engagement was undertaken from 12 August – 31 August 2022 consisting of two Community Drop-in sessions on 17 & 20 August and also offering the community an online engagement opportunity via digital engagement platform Social Pinpoint.

The main purpose of the report is to analyse the key findings and themes identified from community feedback on the three design options for the Central Reserve as well as the two smaller reserves and the proposed plantings.

Step 2 of the engagement provided the community to choose their preferred option for the Central Reserve and share their reasons for their choice. The feedback will guide the finalisation of the public open space design for the Prospect development.

In preparing this engagement report the following methodology was adopted:

- ▾ Collation of comments and feedback received at Community Drop-in sessions on 17 Aug & 20 Aug 2022
- ▾ Collation of survey responses received via Social Pinpoint
- ▾ Collation of written submissions
- ▾ Collation of feedback from the workshop with Rosary Primary School students
- ▾ Identification and analysis of key findings, feedback themes and indicative community support for or opposition to the proposed public open space, in particular their preferred option for the Central Reserve – to guide the final design
- ▾ Summary of the outcomes of the engagement and recommendations for the next steps
- ▾ Analysis of how the engagement process met Renewal SA's engagement objectives

## Project Background

As the South Australian Government's, leading urban development agency, Renewal SA coordinates, develops and delivers projects and initiatives through its people and collaborative partnerships for the benefit of all South Australians.

Renewal SA, on behalf of the State Government, purchased the site at 250B Churchill Road, Prospect in late 2020 from former retailer Kaufland Australia. The purchase of the site by Renewal SA ensures a high-quality outcome which best considers the surrounding infrastructure, amenity and location, and ensures development occurs in a timely manner.

The vacant site is in a high-profile location 7km from the CBD that is well connected to existing transport infrastructure (Islington train station, part of the Gawler Rail Electrification Project and Churchill Road Go Zone bus network).



The site has boundaries to Churchill Road to the east, Regency Road to the north, the Gawler rail line to the west and a medium to high-density development marketed as 1838 to the south.

The project will focus on transforming the 2.36-hectare site into a residential development creating amenities and providing enhanced livability. The concept plan targets:

- ▶ A significant focus on affordable housing, comprising townhouses and apartments (accessing HomeStart Finance's products),
- ▶ provision of 12.5% public open space (proposing extensive tree planting to the public realm), and
- ▶ improved connections and access to existing public transport and pedestrian/cycling links.



## Prospect Time – Key Dates

Action/Activity	Timeline
Initial engagement of key stakeholders by Renewal SA Content	Late 2021-May 2022
Step 1 Community Engagement	Apr-May 2022
Publication of Step 1 Community Engagement Report	Aug 2022
Step 2 Community Engagement	Aug 2022
Finalise Central Reserve design	Early 2023
Publication of Step 2 Community Engagement Report	Nov 2022
Tender process for developers and builders	Early 2023
Start Construction (Civil / Landscape)	Mid 2023
Start housing construction	2024
Project completion	2026/27

\* Note: the above project timeline is indicative only and may be subject to change



# Engagement

## Engagement Background

The State Government had not undertaken any engagement activities regarding the Prospect site prior to its purchase by Renewal SA in late 2020.

Renewal SA is committed to ensuring that key stakeholders, and the local community are engaged as part of the planning and design process for the Prospect development.

## Key Stakeholder Engagement

Renewal SA has undertaken preliminary stakeholder engagement with the following organisations:

- ▼ Briefing to City of Prospect CE, senior staff & Mayor – from November 2021 (ongoing)
- ▼ Briefing to Elected members City of Prospect – April 2022 and September 2022
- ▼ Briefing to Kaurna Yerta Aboriginal Corporation (KYAC) – May 2022 and August 2022
- ▼ Master Plan – conversations with the Planner preparing various development plans on behalf of Eminent homes, the developer of the adjacent project 1838 Prospect

In addition, Renewal SA has liaised with the Department of Infrastructure and Transport (DIT) in relation to the timing and scope of the upgrade works for the Islington Station. Further discussion will be held in conjunction with Council in relation to the potential for additional landscape treatments DIT's land holdings immediately adjacent to the site including the strip of land along Churchill Road, the Regency Road path and embankment area and the rail corridor.

Five marketing research focus groups were convened in April 2022 to gather insights from potential purchasers on four key considerations including public open space. A community garden was favoured along with the concept of share use of the space, nature play and greenspace. There were some concerns about noise from a playground, basketball court and privacy for the reserve fronted homes.

## Community Engagement

Community Engagement for the planning of the Prospect development has been a two-step process:

- **Step 1 (completed)** – to enable Renewal SA to understand the community's current and desired use of public open space (including the main park, connections with the Islington railway station and pedestrian/cycle paths) including feedback from Rosary Primary School Children's University students' workshop. Feedback received during Step 1 will help inform the development of the public open space concept design options for the next step of the stakeholder and community engagement.

- **Step 2 (completed)** Community Engagement occurred from 12 August – 31 August 2022 with community members invited to attend two Community Drop-in sessions on 17 & 20 August and also encouraged to participate online through Social Pinpoint to provide feedback on the three landscape design options for the Central Reserve as well as to provide feedback on the two smaller reserve and the proposed plantings.

## Step 2 Community Engagement

Key stakeholders and community members were made aware in August 2022 of the Step 2 Community Engagement by various means:

- **Email to key stakeholders** – Premier and Minister, City of Prospect, KYAC Board – notifying them of the invitation to community to participate by either attending the Community Drop-in sessions &/or online engagement via Social Pinpoint (and including the Community Invitation post card)
- **Electronic direct email (EDM) to Prospect project subscriber database** (96)– who registered to be kept updated on project progress – inviting them to Have their Say to participate by either attending the Community Drop-in sessions &/or online engagement via Social Pinpoint for Renewal SA's Prospect development
- **Letterbox drop** – of Community Invitation post card to some 550 local properties (residential and businesses in Prospect, Regency Park & Dudley Park)
- **Mailout** – of Community Invitation post card to 140 non-resident property owners, invited to participate by either attending the Community Drop-in sessions &/or online engagement via Social Pinpoint.
- **Council assistance** – by City of Prospect to raise community awareness through distribution of hard copies of the community invitation post card at select council venues and promote via City of Prospect website and social media
- **Email to local schools & the Children's University** – providing the community invitation, to inform of the community engagement opportunity, encouraging to share with school community and canvas schools interest for involvement for students to participate in a workshop around the public open space for Prospect.

The community invitation (in EDM post card format) invited the local community to participate in the engagement activities for the Prospect Central Reserve and open space design options, being two Community Drop-in sessions on 17 & 20 August (Eliza Hall Payinthei, City of Prospect Library) and/or online through Social Pinpoint (Refer Appendices for map of letterbox drop engagement area and community invitation post card).

Renewal SA used an online engagement platform between 12 August – 31 August 2022 (<https://renewalsa.mysocialpinpoint.com/prospect-step-2-engagement>) to seek feedback via the Renewal SA's Prospect Social Pinpoint site - Map and Survey, where community members were able to:

- view information on the concept design options for the Prospect development public open space,
- complete an online survey to vote for their preferred option for the Central Reserve, and

- ▼ provide feedback about their selection, the Link and Corner reserves and the proposed plantings; and
- ▼ provide information about their current and future interest in the project.

An offline version of the Prospect Central Reserve and open space design options and Survey was also available on request by community members.

## Engagement Outcomes

Expected outcomes from Renewal SA's community and stakeholder engagement from Step 2 is to:

- ▼ Understand the community's views and preferences on the design options for public open space reserve areas for the Prospect development.
- ▼ Further understand the community's current and future interest in the project
- ▼ Continue building relationships with the local community prior to the construction period
- ▼ Continue to communicate to the community the vision for developing the site
- ▼ Use community feedback from Step 2 to help finalise the public open space design for the Prospect development.

## Engagement Participation

### Engagement Activity

In summary, over the engagement period 35 participants and 7 Children's University school students were engaged across the feedback methods as follows:

- 19 participants attended the two Community Drop-In sessions, casting 30 voting dots for their preferred design option for the Central Reserve and providing 33 post-it note comments
- Over 200 visits to the online engagement platform Social Pinpoint, with 14 surveys submitted
- Seven Rosary Primary school students participated in a second workshop with Renewal SA's appointed Landscape Architect
- Two emails received
- One hardcopy submission received at the Community Drop-in session.

### Community Drop-in Sessions

Some 19 participants attended the two Community Drop-in Sessions (held at Eliza Hall, Payinthe- City of Prospect Library) including the City of Prospect Mayor and Council Ward members. There was a mix of local residents and participants from outside the engagement area. Four participants/groups identified as living

(or their household) within the engagement area and the remaining 15 participants/groups a combination of residents/property owners or workers living outside the engagement area (see Appendices) but within the Prospect area.

Each of the Community Drop-in Sessions was staffed by Renewal SA project team members and Greenhill Landscapes team members.

Participants attending the sessions were:

- invited to view and provide feedback on the three public open space design options for the Central Reserve
- encouraged to speak to and ask questions of the Renewal SA project team and the Landscape architect (GD Studia)
- encouraged to vote for their preferred Central Reserve design option using coloured dots and,
- invited to comment with post-it notes on their preferred option, the Corner & Link reserves and the suggested plantings, on the topic panels (Central Reserve Preference, Corner and Link Reserves and Plantings) or the ideas and comments panel.

Participants could also speak with the Engagement team member demonstrating the 'live' Prospect Social Pinpoint site. Participants were encouraged to sit down and view how it worked and advised they could provide further feedback online at any time after the Community Drop-In sessions until 31 August 2022.



On arrival participants/groups (19) were asked to share their current and future interest in the Prospect development:

- 9 would potentially visit the new reserves
- 4 would access the railway station for commuting
- 1 would definitely and 4 would possibly consider purchasing

Conversations with the team members at the Community Drop-in sessions included:

- Appreciative for the opportunity to be engaged and provide feedback
- Positive about the Prospect development, increased green space in the area
- Supportive of the Central Reserve and proposed design options
- Agreed with plant selections especially natives and edible plants
- Need to revegetate and light the Regency Rd embankment
- Need to ensure ongoing care and maintenance beyond establishment of public open space and plantings
- Suggest development be outward facing towards Churchill Road and there be some activation/connection to the Reephram Hotel
- Inclusion of a southern entrance to the train station
- Small café

## Key Topic feedback

### Central Reserve

A key element of the Prospect development will be the landscaped Central Reserve. The reserve will connect the public open space within the development between the two smaller reserves - the Link and Corner Reserves. This multi-use reserve of approximately 2100m<sup>2</sup> will provide the local community with a public open space for individual and family/group activity, relaxation and a green focal point for the Prospect development.

The Central Reserve will feature three defined spaces:

- **Western Plaza Space** - Trees and plantings, all-weather shelter, picnic table, various seating, BBQ facilities, bike racks, bins and drinking fountain/refill station
- **Central Lawn** - A tree-lined kick-about space for walking, play and picnics
- **Eastern area options:**
  1. Reflective space
  2. Discovery/Nature Play space
  3. Active space

The three design options were based on the community feedback received earlier this year in Step 1 of the Engagement.

Participants were:

- invited to view each of three options on display panels which provided detail on the different features of each design
- encouraged to speak to and ask project team members questions
- invited to vote for their preferred option and provide the reasons for their choice with post-it notes.



## CENTRAL RESERVE CONCEPT OPTION 1

### PASSIVE/REFLECTIVE SPACE



## CENTRAL RESERVE CONCEPT OPTION 2

### DISCOVERY NATURE PLAY SPACE



## CENTRAL RESERVE CONCEPT OPTION 3

### ACTIVE SPACE



Community Drop In session voting and feedback for the Central Reserve preferred design option outcome (see page 15 for the comments)

Option	1 <sup>st</sup> Preference	2 <sup>nd</sup> Preference	3 <sup>rd</sup> Preference
<b>1 Passive/Reflective</b>	0	3	8
<b>2 Discovery/Nature Play</b>	7	2	2
<b>3 Active</b>	4	6	1

Feedback received at the Community Drop-in sessions supported features of both options 2 (Discovery/Nature Play) & 3 (Active) including: the neighbourhood food bowl, indigenous food pathway and native plantings, space suited for families/children. In addition, suggestions were made to include toilets, café/food truck space, dog space and some concern was expressed about the basketball/netball court/hoop location.

### Feedback on suggested plantings included:

- Support for the good variety of trees and plantings including community kitchen type plants, native/indigenous species
- Support for quick growing, low water plant choices and great idea to reduce Urban Heat Effect
- Please look after water requirements! Great plants
- Perhaps a 'learn path' with descriptions of plants

### Feedback on the Link and Corner reserves included:

- More bins if area is used for foot traffic to/from train station
- Check sight lines from pedestrian crossing through the reserve
- Mandatory stormwater retention and public open space around entire complex
- Love features – connect with bike lanes



- Would appreciate the Link Reserve easily connecting with pre-existing bike infrastructure to improve cycling journeys to/from city

Participants were invited to provide **any other ideas or comments**, which included:

- Any roads, lanes, reserves to have First Nations Kurna names. Consult First Nations Naming Association
- High density living needs dog friendly open/community spaces. If no dog park, can open spaces have some fences to stop dogs running on the road
- Can you please talk to Reephram about future develop to activate & create more community focussed site.

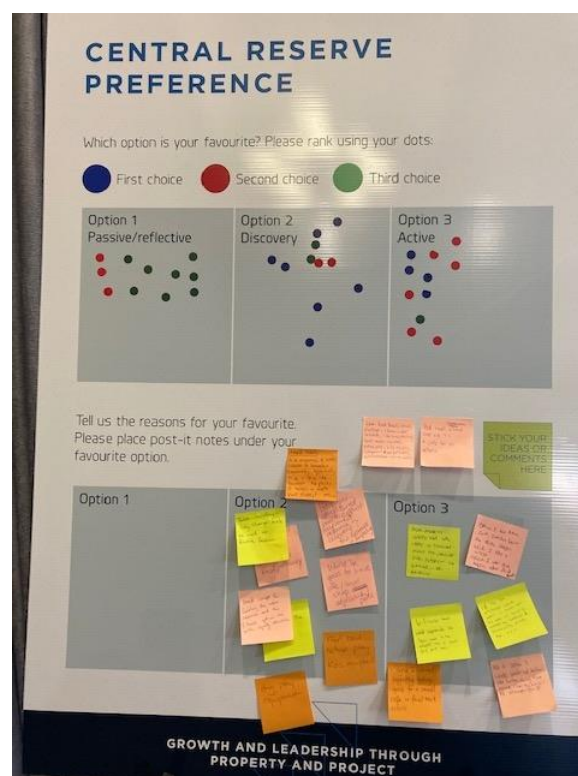
## Community Drop-in session Post-it note feedback

### Option 1 Passive Reflective space

No comments received

### Option 2 Discovery Nature Play space

1. Great concept for families, the nature reserve and the fitness option are both equally attractive
2. Food bowl, nature play kids equipment
3. Love food bowl, lawn, plantings, stormwater retention, litter bins (recycling) quiet area, shelter, nature play, bike racks, indigenous food pathway, multigenerational active zone
4. Love the food bowl and indigenous food pathway
5. Need toilets to be accessible and more usable to broader community. Opportunity to be a space like Bowden  
No parks with toilets in north east Prospect important esp. for parents & children changing space
6. Toilets including baby change table as well as disable facilities
7. Also suggest coffee bar or I in development as venue for people to gather eg Bowden
8. Would be good to have café/local shop adjacent park
9. Have you considered how to support improved resource recovery? Bin systems or composting
10. Great for the local area
11. Dog play equipment



### Option 3 Active space

1. Circular lawn (6) would appreciate the lawn area to be adapted into a small dog park area
2. I'd like for whichever reserve space is chosen, that the area can be easily access by food trucks to recreationally activate the areas
3. Agree with comments supporting making space for a small café or food truck access
4. Need small neighbourhood shop (convenience store) eg 711 and café for all options
5. No 5 (active zone) Option 3 locate basketball/netball area further away from housing closer to Churchill Rd between 4 (shelter seating bins) & 7 (plantings)
6. Options 3 have active zone, circular lawn and Plaza design which I like most. Option 1 also good design after that

## Corner Reserve

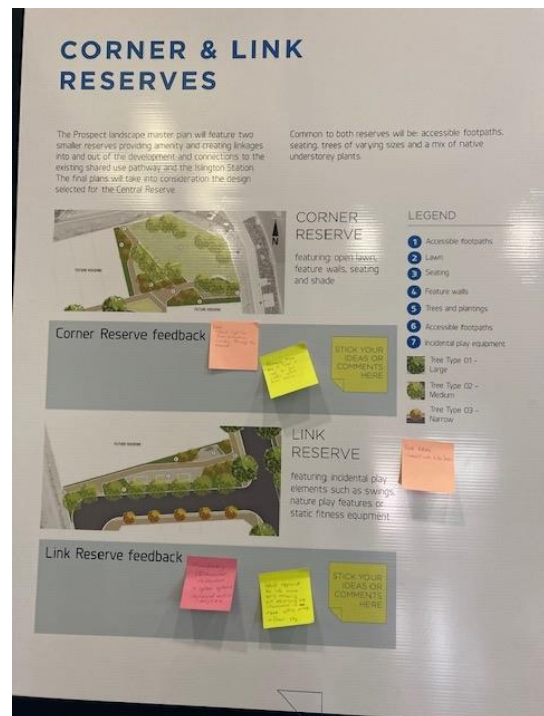
1. Probably more bins if area is used for foot traffic to/from train station
2. Check sight lines from pedestrian crossing through the reserve

## Link Reserve

1. Mandatory stormwater retention and open space around entire complex
2. Love features – connect with bike lanes
3. Would appreciate the Link reserve easily connecting with pre-existing bike infrastructure to improve cycling journeys to/from city

## Plantings

1. Good mix of plants
2. Good mix of plants. Great idea to reduce Urban Heat Effect
3. Good selection of deciduous and evergreens and native species
4. Quick growing, low water use choices are best. Indigenous choices are great
5. Please look after water requirements! Great plants
6. Perhaps a 'learn path' with descriptions of plants
7. Love the options Cupaniopsis anacardioides, Hymenosporum flavum, Fraxinus pennsylvanica, Citrus, Thymus, Origanum. I love the idea of community kitchen type plantings

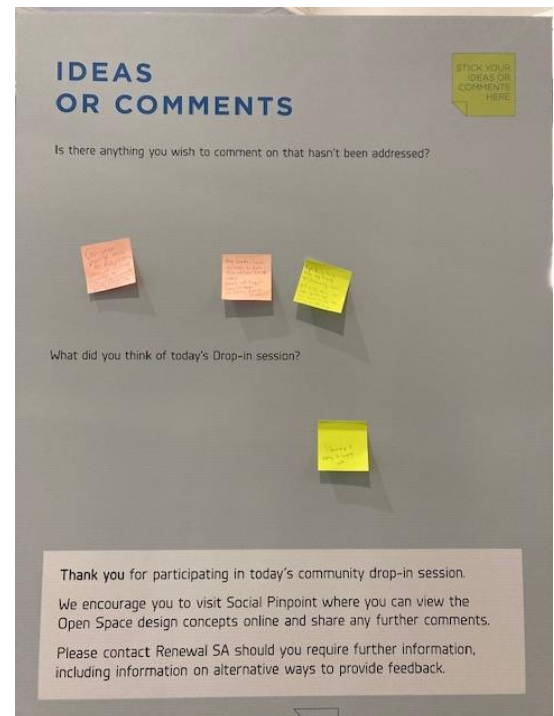


### Ideas or comments

1. Any roads, lanes, reserves to have First Nations Kaurna names. Consult First Nations Naming Association
2. High density living needs dog friendly open/community spaces. If no dog park, can open spaces have some fences to stop dogs running on the road
3. Can you please talk to Reephram about future develop to activate & create more community focussed site

### Engagement experience today

- Informative and easy to engage with





## Online Engagement Social Pinpoint

Renewal SA is using Social Pinpoint, a widely used and successful online engagement tool, to collect community feedback on concept design for the Prospect development open space.

Social Pinpoint has been used for public engagement successfully by many councils and government agencies (including Renewal SA) in Australia and globally.

**Social Pinpoint** is a map based online engagement tool to collect community feedback and ideas. Social Pinpoint features include interactive maps, ideas walls, survey and informative pages. It enables online discussion through posted comments. Social Pinpoint is available 24/7, can be translated into over 100 languages and is accessible from both desktop and mobile devices.

Social Pinpoint link: <https://renewalsa.mysocialpinpoint.com/prospect-step-2-engagement>

The Map and Survey tools used for Step 2 Prospect Community Engagement, provided participants with an overview of the engagement process, relevant project background information and enabled participants to:

- view information on the concept design options for the Prospect development Central Reserve,
- complete an online survey to vote for their preferred option, and
- provide feedback about their selection, the Link and Corner reserves, the proposed plantings and their current and future interest in the project.

If participants had questions, required further information or assistance, they could approach the Renewal SA Engagement team by phone or at [RenewalSA.Engagement@sa.gov.au](mailto:RenewalSA.Engagement@sa.gov.au).



## Survey Responses

During the Community Engagement period, the Prospect Social Pinpoint site received some 200 visits, with 14 survey responses received, providing respondents' preferences and feedback on the:

- three public open space design options for the Central Reserve,
- suggested plantings,
- Link & Corner reserve,
- future use of the Social Pinpoint site, and
- online engagement experience.

A total of 14 survey responses were received.

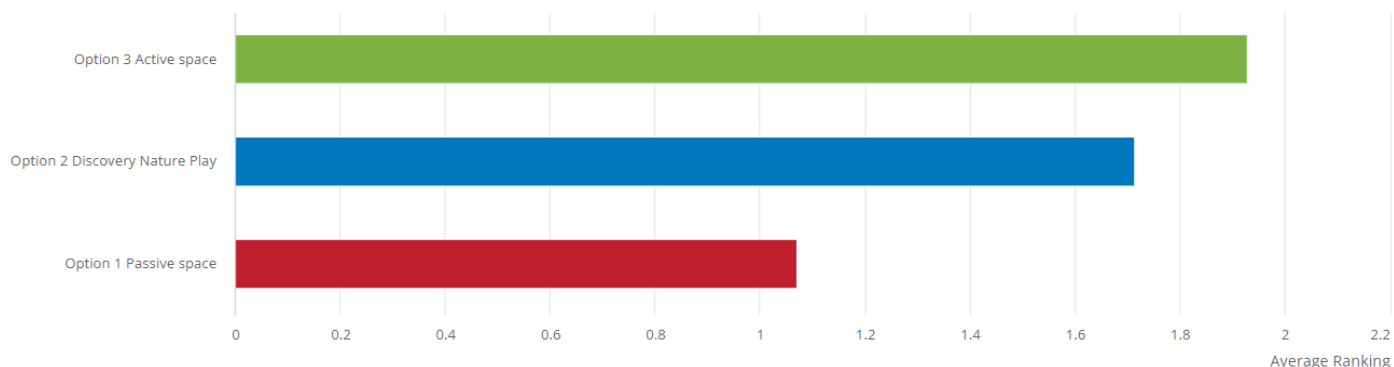
Survey participants identified their current interest in Prospect as follows:

- 11 respondents live in the area,
- 3 have family/friends living in the area,
- 2 would like to live in the area,
- 2 would like to purchase in the area
- 1 has a business in the area, and
- 0 work in the area



Fourteen participants ranked their preferred option/s of the 3 designs in order when asked **Please let us know your preferred option for the Central Reserve.**

Social Pinpoint applies a weighting method to demonstrate the outcome of the preferred options.



Fourteen participants provided the following comments when asked **Thank you for letting us know your preference for the Central Reserve, we are interested to know why you made this selection.**

- Additional lawn area is nice as could have small group fitness class here instead of on main oval area. Fitness equipment looks good and looks similar to the ones they have near Prospect Road North Adelaide. Love the gardens with herbs and citrus.
- Calm relaxing space with more trees so good for Prospect.
- Discovery or active space to encourage usage of open space.
- I like all three plans but given it's such a small area I feel the more trees and plants as there is such a large area of housing around.
- It has more layers to it, there is more to do here for a more diverse range of users.
- I think this will be better suited to the potential people who will be able to afford to live in these dwellings & for the existing residents in the close by area.
- I think this will be the best use of space and most utilised option as the link and corner garden will have areas to sit and relax.
- It is the most engaging and versatile and will appeal to families, the elderly, people with disability, couples and individuals.
- Love the balance and focus on recreation and wellbeing.
- Option 1 - I vibe with the most, Extra plantings I prefer. Option 3 - I never see many people using public exercise equipment, the space could be utilized better. Option 2 - I don't like kids and don't plan on having any so I don't see benefits to a playground.
- Prospect is thriving suburb. A dedicated area for family and kids is best suited option.
- Seems to be the most simple and easy to maintain. My assumption would be an 'active' space would be best design to suite people living in high-density living. Do not agree with the small basketball / netball court as there are already plenty of these around in close by parks. Many do not get used.
- Something for the kids to do.
- There are very few playground options on the western side of Prospect for children (especially those living in apartments or with courtyard gardens) to access. Prospect is home to many young families.

Eleven participants provided the following comments when asked **Do you have any feedback about the suggested plantings?**

- For the love of God, DO NOT plant any variation of *pyrus celleryana*! Its introduction into suburbia has left a stain on our streets that we may never recover from. On top of that, to quote Wikipedia, "Their dense clusters of white blossoms are conspicuous in early spring, with an odor often compared to rotting fish or semen.[9][10][11][12] According to extension specialist Kelly Oten of North Carolina State University, the smell attracts flies which are the primary pollinators rather than bees." Literally plant anything but this tree! In addition to this, it would be great to see more native evergreen trees instead of non-native deciduous trees. The ash and the cherry plum are not great choices. Why not *Banksia marginata*, a plant that was once prevalent on the Adelaide plains? Native frangipani, lemon-scented gum, and tamarind are all good selections. Why not bring big gums to our local parks? Other than that, edible plant selection looks good.
- Good idea but not too many tall trees (avoid blocking the surrounding view) and maybe mindful of magpies swooping especially kids play area.
- I'm happy with whatever landscapers recommend.
- I think it is great and like that there are a few dedicated areas for different types of uses.
- Large and deciduous trees and similar to Memorial Park in Prospect.
- Low maintenance plants as Prospect Council will not look after them.
- Native plants and sensory garden.
- Need to ensure plantings deliver maximum canopy cover and are suitable biodiversity for the area. The corner space is surrounded large corridors and heavy traffic so plantings will be critical in managing urban heat island, shelter for fauna, shade, noise attenuation etc.
- Nice mix of evergreens and also blossom style / colourful seasonal trees would be lovely in the area. Please don't put too many spiky grasses as they are not nice for dogs and children.
- No, just make sure they match the eventual maintenance regime of council.
- Only that mature plants should be planted and as some of the trees will take 10 years to get shade from. Has there been any thought put towards the turnaround time for shade the trees to develop? Is this a 10-year plan, how have you accommodated this in the overall plans?

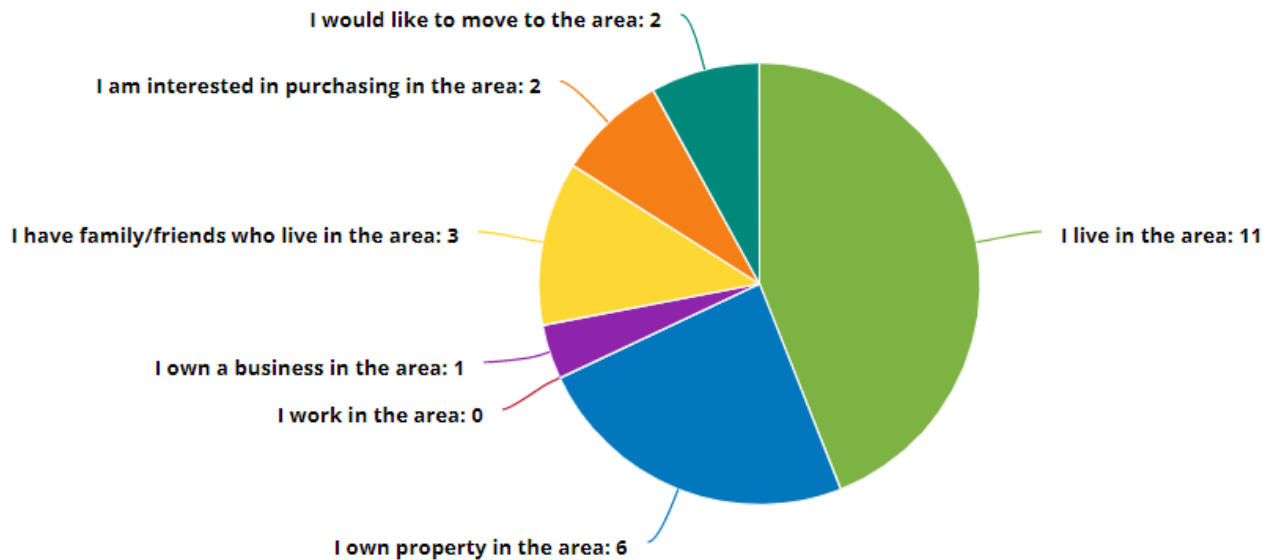
Eleven participants provided the following comments when asked **Do you have any feedback about the Link Reserve or the Corner Reserve?**

- Both seem good, a big statement gum would look great in the centre of the corner reserve.
- Corner Reserve may include water features like small pond for ducks.
- Great opportunities for biodiversity corridors, promotion of active transport options, and to break up what will be large swathes of hard infrastructure.
- I don't think anyone will use the corner reserve, it will be an extremely loud and exposed area.
- In the interest of community safety, please ensure these areas are adequately lit and open areas. Ensure there are bins including at least one in area with dog bags
- I think there should be seating and shaded areas otherwise they will not be utilised
- I would like to see a dog park.
- I would like to see as much green space as possible.
- I would love to see the corner space shifted to align with the main open space on Churchill Road, this would open the main park to Churchill Road and reduce the sense of semi-private open space you have created with this layout. It's a pretty crappy spot for open space, ever stood on that corner! would be a great spot for a double-glazed apartment building.
- No
- These are good design elements. I think the corner reserve needs to have a key purpose. Seems a bit of a nothing space. The link reserve should be focused on how people would use coming and going from public transport for the link reserve, safety and lighting is a must here. I would suggest a herb/ community garden would be best here as people could grab a lemon on the way home, or some rosemary. A swing for kids/ adults to have a play could work well.

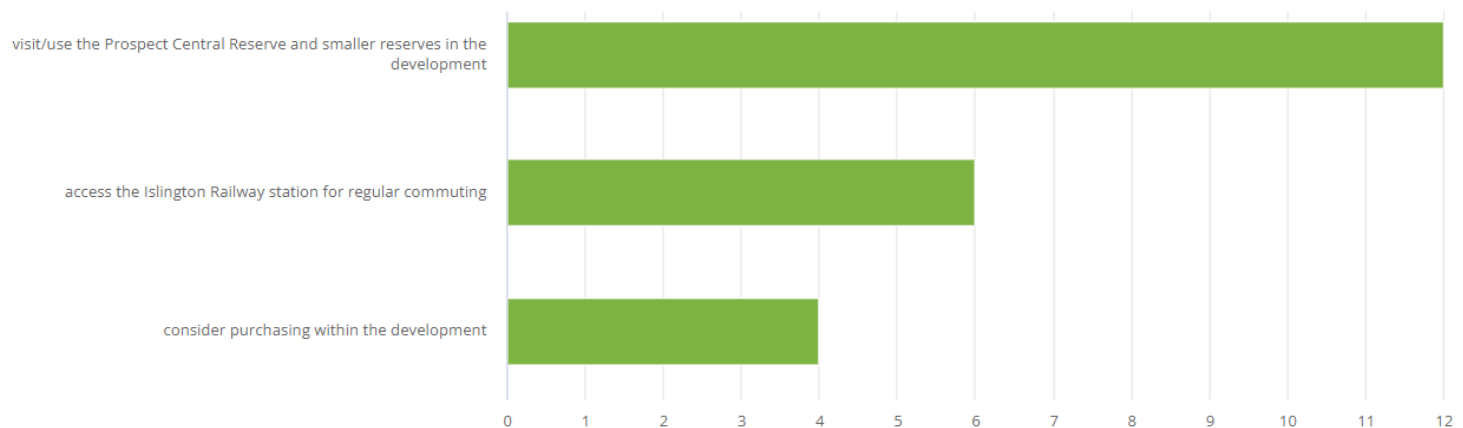
Nine participants provided the following when asked **Any other comments you would like to add**

- All three plans look great. What sort of trees will be planted along the streets?
- Dedicated space for eateries/cafe/food trucks for family events.
- I would like to see a dog park.
- Love what Renewal SA, Council and Government are doing in Prospect.
- Please consider opening the main park to Churchill Road. The current configuration makes it a semi-private garden that is hidden from the broader community. I would love to see the newbies in this development as part of the community, the inward-looking layout isn't inviting anyone else in.
- Prospect Council has been very bad at maintaining other public spaces so this needs to be low maintenance.
- Quality street art as per other pieces throughout Prospect would be welcome in the space. Thank you.
- Safety and public lighting over all are key to ensure people feel safe. The biggest risk I can see with this development is that it becomes/ or feels like a 'ghetto' in the future. There was strong feedback around this from community members early on and I agree, this risk could happen eventually, as the open space is enclosed and always out of site and too small to ever be something like Bowden or similar. It also seems short sighted to now know what is happening with the vacant block next to this development as this would heavily influence the community impact over the long term (10 years +). I read the quote from Renewal SA about project having one of the smallest volume of green spaced in metropolitan areas. This overall design is not really doing anything to addressing that issue. 2900 sqm in total vs green space 70 metres long and 23-35 metres wide. I would strongly advise that this needs to be addressed to ease community concerns.
- Say no to Pyrus calleryana!

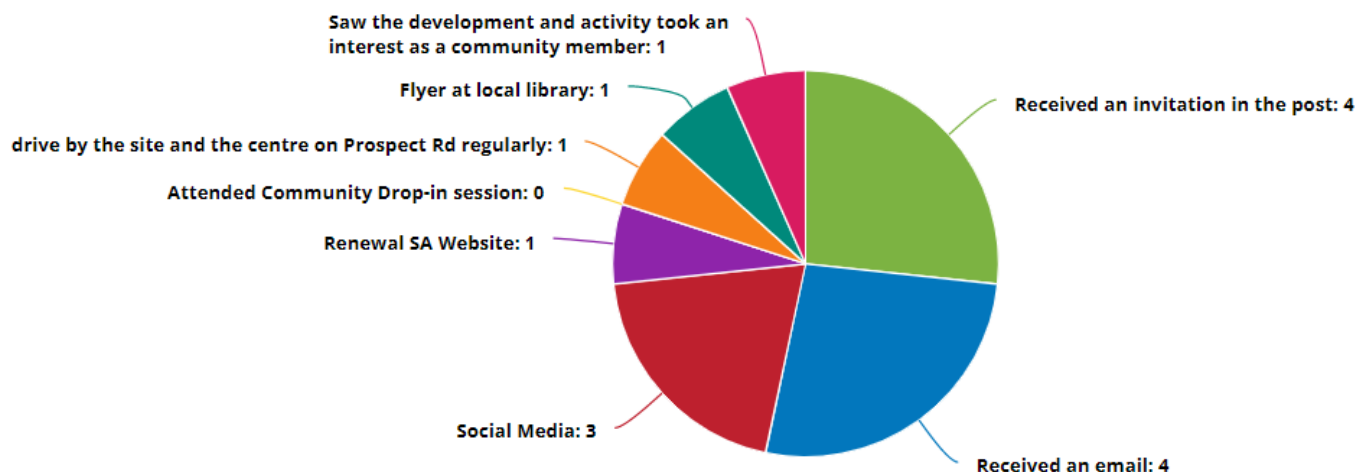
Fourteen participants provided the following response when asked **My interest in Prospect**



Fourteen participants provided the following response when asked **On completion of the Prospect development I am likely to**



Fourteen participants provided the following response when asked **How did you find out about this Prospect Community Engagement for the Central Reserve**



In order to evaluate and improve future online engagement, participants were asked to provide feedback on the engagement experience (being the second online engagement for the Prospect development). This was not a mandatory question and 10 responses were received. Comments were mostly positive; however also included useful feedback to consider for future online engagement.

**To help us improve your community engagement experience please tell us how you found using Social Pinpoint to provide feedback**

- It's great, well done
- it was easy once I read the instructions (which were clear and straight forward)
- Love the platform, very easy to navigate and use
- Pretty good, one very annoying thing that happened was I started filling out my responses to this survey and accidentally clicked on the plantings tab which made all my responses disappear
- The interactive map was good and I appreciated the work that has been put in to illustrate the various options available
- User friendly
- Very easy to use
- Not great. the overall maps and images where good, however to navigate from your email to this site, vs you other sites, was not a great user experience. I would suggest making more simple
- Works ok, little bit clunky to navigate around, but ok
- Complicated

## Engaging Young People – Step 2 Rosary Primary School students

Through the Children's University Renewal SA had the opportunity to hold a second brief workshop with seven Y3 – Y6 students at Rosary Primary School, Prospect and the appointed Landscape Architect for the project, on 16 August 2022.

The workshop focused on getting young people's ideas and feedback on the three design options for the public open space – particularly the Central Reserve.

The workshop comprised:

1. Brief introduction of the Project development (draft master plan) and overview of the three Central Reserve design options with opportunity for students to ask clarifying questions (as none had attended the initial June workshop)
2. Pictures and voting exercise – in which the students were asked to stand by their favourite option (on A3 printouts on the floor)
3. Students spoke individually about the features of their preferred option
4. Students then nominated their second favourite option and shared the features they liked and offered further feedback

### 1. Introduction and Overview Master Plan

The key feedback from students during the June workshop was the preference for, seating with shelter, water/running water, grassed area for play or picnic, and play equipment and/or nature play space.




Each of the three design options was introduced and its features explained to the students and how the features have been incorporated into each of the design options.





## 2. Options vote

Students were then invited to stand alongside an A3 printout of their preferred option to cast their vote.

<p><b>Option 1</b> with big lawn in middle, tree planting, seating, garden beds. BBQ/gathering space and sunken central lawn</p>	<p><b>Option 2</b> with big open lawn area (sunken), shelter, picnic setting, bike racks, BBQ, garden with big plantings (neighbourhood food bowl), lots of tree planting, shade, tree planting, nature play including steppers, logs and plantings to weave through with shelter, picnic setting and more seating.</p>	<p><b>Option 3</b> with lawn, neighbourhood food bowl, shelter, seating, BBQ, circular lawn, more seating, shelter, small-scale netball goal ring, exercise and fitness equipment.</p>
<p>PASSIVE/REFLECTIVE SPACE</p> <p>LEGEND</p> <ul style="list-style-type: none"> <li>1 Place</li> <li>2 Central lawn</li> <li>3 Seating</li> <li>4 Litter bins</li> <li>5 Plantings</li> <li>6 Trees</li> <li>Feature: Deciduous Tree</li> <li>Small Eucalyptus Tree</li> <li>Avenue Tree</li> <li>Potential Storm-water Detention - sunken area with turfled slopes (15 gradient)</li> </ul> 	<p>DISCOVERY NATURE PLAY SPACE</p> <p>LEGEND</p> <ul style="list-style-type: none"> <li>1 Place</li> <li>2 Central lawn</li> <li>3 Neighbourhood food bowl</li> <li>4 Indigenous food</li> <li>5 Native Play</li> <li>6 Shelter, seating and bins etc.</li> <li>7 Trees and plantings</li> <li>Feature: Deciduous Tree</li> <li>Small Eucalyptus Tree</li> <li>Avenue Tree</li> <li>Potential Storm-water Detention - sunken area with turfled slopes (15 gradient)</li> </ul> 	<p>ACTIVE SPACE</p> <p>LEGEND</p> <ul style="list-style-type: none"> <li>1 Place</li> <li>2 Central lawn</li> <li>3 Neighbourhood food bowl</li> <li>4 Shelter, seating and bins etc.</li> <li>5 Active Zone</li> <li>6 Circular lawn</li> <li>7 Trees and plantings</li> <li>Feature: Deciduous Tree</li> <li>Small Eucalyptus Tree</li> <li>Avenue Tree</li> <li>Potential Storm-water Detention - sunken area with turfled slopes (15 gradient)</li> </ul> 

- There was strong preference (6 votes) for Option 3, when students were asked for their favourite option with 1 vote for Option 2 and no votes for Option 1. Students indicated they liked the sport/fitness equipment, being able to shoot hoops, play on the extra reserve (circular) space, meet up for BBQs/picnics and be active (see comments below).
- When students were asked to nominate their second preference the votes reversed with 6 votes in favour of Option 2 and 1 vote for Option 3. Students indicated they liked the nature play and the neighbourhood bowl and the opportunity to grow food (see comments).

## 3. Option 3 feedback on their favourite – Why I like this option?

### Student's comments included

- the 2<sup>nd</sup> (smaller circular) oval, and the sport equipment, agreed they liked playing on the exercise equipment and shooting goals and the big open space able to kick a footy with dad, play cricket and BBQ on the reserve
- like shooting hoops and sports equipment, use the grassed area
- lots of people go there, have fun meet up play games
- lots of space to play, more space
- be active in the whole area, do fitness & use the picnic tables
- sport equipment and have a BBQ would use the netball goal and run around on the grass

## Option 2

### Student's comments included

- play sport, footy, soccer and then go on to Nature play, seat without plantings (no bird poo)

### Anything extra

- would like a pool
- like water feature to play in – water cannons and play with friends
- water into a sandpit
- footy goals/soccer goals
- fencing/gates from the houses into the reserve
- cricket pitch

### Why this option is my 2<sup>nd</sup> favourite?

### Student's comments included

- Nature play
- Include nature play within the 3<sup>rd</sup> option
- Nature play cool and fun
- Like the nature play,
- Like the garden spot and the nature play. People grow stuff like a community garden
- Roll around in the nature play and also climb logs and I like the garden also, you can grow other sorts of food.
- Like the nature play, similar to the other one (option 2) and its big


**The students raised questions about the stormwater and the central lawn area, with discussion on water to play in or channeling through a 'creek' into a sand pit.**

## 2<sup>nd</sup> choice Option 3

Kick the soccer ball into the seating wall, netball, like the active nature of the reserve.

Fitness equipment

**The students also asked questions about the location of bins, car parking and lighting.**



At the end of the session students and teachers were thanked for their time, advising that student feedback would help guide the finalisation of the open space design for the Prospect development.

Have your say invitation was emailed to teachers to share and Certification of Participation to follow.

## Written Submissions

Three written submissions were received during the engagement period being:

- Hardcopy comments provided to team during the Community Drop-in sessions
- Two Emails submitted

### Received at Community Drop-in session

## Comments on Redevelopment of former TNT Site

### Include

- Café or café kiosk
- Avoid “hidden” areas to discourage drug use
- Dog friendly (only at certain times) with doggy bags and bin
- Fountain with drinking water
- Toilets?
- Flora-related learning path
- Play equipment
- Shelter shed with bin next to it

### Email received Tuesday 16 August 2022

Hello

I have looked at concept plan for Prospect development and I am disappointed there is no activation/engagement with Churchill Road. With increased residential population it is perfect place to activate with cafe/commercial and community facilities. This would support redevelopment/improvement of Reepham Hotel and properties along Churchill Road. Community activation such as at Bowden is needed. Please talk to Reepham about their plans they need to make improvements to attract new customers and use car park space more effectively. The carpark attracts drug dealers etc as it is dark and not activated with people. Creating a welcoming integration of new development with existing facilities is needed rather than internal focus of current plan.

Name withheld

**Email Received Monday 22 August 2022**

Hi Team,

I'm a resident at Prospect 1838 development and I'm excited to hear from Renewal SA on the masterplan for an open space.

I'm looking at the Prospect Step 2 Engagement survey and I'm quite intrigued with the **Option 2: Eastern Discovery Nature Play Space**.

Prospect is a thriving suburb, filled with people from all generations, in particular, more young families with children so it makes more sense to design an open space to fit such demographic.

On the survey, there's a few dot points on the features of interactive play space including timber play, climbing totems etc. That is amazing, and would like to suggest Renewal SA may draw some inspiration on the play area concept design from a award winning design, please see link: <https://playpoint.asia/projects/malls/waterway-point/>

In addition, I would like to suggest the Renewal SA could also allocate a dedicated space for market space opportunity. A space for truck food sellers, local fresh food producers, handicrafts etc. Essentially, a space for mini food festival right here in Prospect! That will attract business opportunity for space event hire! What more, a space for mini concert nights for Adelaide Fringe Festival!

Lastly, I like to add on that if there's any ideas to link up the Islington train station to the new open space concept, I think sheltered walkway from the station, would be great idea.

I hope Renewal SA could consider these ideas.

Regards

Name withheld

## Key Engagement Findings

Feedback revealed:

- Favorable response to more open space for the area, supporting the Central Reserve lawn area and the Circular lawn
- Features common to all 3 designs were also supported
- Strong support for both Discovery/Nature Play and Active space design options and less for the Passive/ Reflective design
- Majority preference for active space by the school students
- Supportive of the neighbourhood food bowl, indigenous pathway features, family focused activities, suggested trees and plantings (with concern about ongoing care and maintenance)
- Lighting and parking raised and concern about the location for basketball/netball court/hoop.
- Other suggestions included toilets, access for food trucks, café, dog park and cycle linkages
- Revegetation and lighting of Regency Rd embankment (DIT) also suggested

Feedback received online via the Social Pinpoint survey indicated most support for Option 3, followed by Option 2 and then Option 1 with comments regarding their preference as follows

- Additional lawn area is nice as could have small group fitness class here instead of on main oval area. Fitness equipment looks good and looks similar to the ones they have near Prospect Road North Adelaide. Love the gardens with herbs and citrus
- Love the balance and focus on recreation and wellbeing
- Discovery or active space to encourage usage of public open space
- I think this will be better suited to the potential people who will be able to afford to live in these dwellings and for the existing residents in the close by area
- Seems to be the most simple and easy to maintain. My assumption would be an 'active' space would be best design to suit people living in high-density living. Do not agree with the small basketball / netball court as there are already plenty of these around in close by parks. Many do not get used.

### Did the outcomes from the engagement activities achieve the objectives?

Engagement Outcomes	Feedback
Consult with local community members on the Prospect public open space design options	Feedback from the engagement indicated local community members feel more informed and are supportive of the landscaped design options for public open space reserve areas for the Prospect development
Provide broader context to the public open space – in particular how the previous engagement has helped to shape the public open space design	Feedback from participants during the engagement indicated local community appreciated the opportunity to hear about, ask questions and provide feedback during the 2-Step engagement process for the Prospect development.



Engagement Outcomes	Feedback
Manage queries and concerns	the feedback from engagement (concerns, issues and ideas) will be used to help finalise the design of the public open space areas for the Prospect development.

- Positive feedback received about the engagement process during the Community Drop-in sessions, with feedback from online participants mostly positive; however also included useful feedback to consider for improving future online engagement.

## Conclusions and recommendations

Overall, community feedback received across the engagement methods indicated support for the Central Reserve designs and open space areas within the Prospect development.

Feedback revealed:

- Favorable response to more public open space for the area, the Central Reserve lawn area and the Circular lawn
- Features common to all three designs also supported
- Strong support for both Discovery/Nature Play and Active space design options and less for the Passive/ Reflective design aspects
- Majority preference for Active space by the Rosary Primary School students
- Supportive of the neighbourhood food bowl, indigenous pathway features, family focused activities, suggested trees and plantings (with concern about ongoing care and maintenance)
- Lighting and parking raised and concern about the location for basketball/netball court/hoop being too close to houses.
- Other suggestions included toilets, access for food trucks, café, dog park and cycle linkages
- Revegetation and lighting of Regency Rd embankment (DIT) also suggested (noting this is outside of the Prospect development boundary and is not in Renewal SA's ownership)

Design considerations based on the feedback:

- Central Reserve be a hybrid of options 2 & 3 incorporating nature play, the circular lawn area and exercise equipment
- Basketball/netball hoop requires further consideration
- Link Reserve reflect the elements suggested in the design with inclusion of communal herb garden

## Next Steps

All feedback collected from Step 2 Community Engagement will help finalise the public open space design (refer Appendix 4 revised plans) for the Prospect development in conjunction with the City of Prospect. The final plan is subject to Council approval.

Feedback received which falls outside the scope of the Prospect development area has been noted and provided to the relevant government department/agency – City of Prospect and Department of Infrastructure and Transport. Renewal SA will actively follow up with both stakeholders given the importance of these interfaces to the Prospect development.

## Appendices List

Appendix 1 - Engagement invitation to community informing of commencement of engagement process

Appendix 2 – Engagement Area – map showing letterbox drop area for community invitation

Appendix 3 – Links to Prospect Social Pinpoint site & project webpage for Display panels

Appendix 4 – Revised Landscape plans post engagement

## Appendix 1 - Engagement invitation to community informing of commencement of engagement process



**PROSPECT**

HIGH-QUALITY PUBLIC OPEN SPACE

## INVITATION HAVE YOUR SAY

Renewal SA is committed to ensuring that key stakeholders including the local community are engaged as part of the planning and design process for the Churchill Road, Prospect development.

You are invited to you to share your views on open space concepts at our community drop-in sessions where you can:

- ▼ provide feedback on open space concept design options
- ▼ meet and hear from Renewal SA project team members
- ▼ learn how to provide feedback online during August

Your feedback will help guide the finalisation of the open space design for the Prospect development.

**RenewalSA**

Following on from the recent online Prospect community engagement in May 2022, Renewal SA has developed three concepts for the open space reserve areas.

You are invited to share your feedback at the community drop-in sessions on:

- ▼ Wednesday 17 August 2022 from 4:00 pm to 6:00 pm, or
- ▼ Saturday 20 August 2022 from 11:00 am to 2:00 pm

At the Eliza Hall, Payinthe, Prospect Library, 128 Prospect Rd, Prospect, SA, 5082

**PLEASE BOOK**  
to attend the community drop-in sessions at:  
[events.humanitix.com/prospect-step-2-engagement](https://events.humanitix.com/prospect-step-2-engagement)

**ALTERNATIVELY**  
you can provide your feedback online between 10 August – 31 August 2022 by visiting:  
[renewalsa.mysocialpinpoint.com/prospect-step-2-engagement](https://renewalsa.mysocialpinpoint.com/prospect-step-2-engagement)



Should you require further information, including alternative ways to provide feedback, or to be kept informed on the progress of the Prospect project please visit: [renewalsa.sa.gov.au/projects/prospect](https://renewalsa.sa.gov.au/projects/prospect)

For other engagement enquiries please phone 8207 1300 or email [RenewalSA.Engagement@sa.gov.au](mailto:RenewalSA.Engagement@sa.gov.au)

  
 Government of South Australia



Appendix 2 – Engagement Area – map showing letterbox drop area for community invitation



Appendix 3 – Links to Prospect Social Pinpoint site & project webpage for Display panels

<https://renewalsa.mysocialpinpoint.com/prospect-step-2-engagement>

<https://renewalsa.sa.gov.au/projects/prospect/>



Appendix 4 – Revised Landscape plans post engagement finalisation is subject to Council approval

## CENTRAL RESERVE CONCEPT OPTION 4

### LEGEND

- ① **PLAZA SPACE**  
Key features include an all-weather shelter, various types of accessible seating and amenities including BBQ facilities, drinking fountain / refill station and bike racks.
- ② **KICK-ABOUT**  
The central lawn area is to act as an open kick-about space with direct access from perimeter footpaths. Garden beds with a variety of understorey planting and trees frame the open lawn area.
- ③ **NEIGHBOURHOOD FOOD BOWL**  
Raised garden bed with edible plants, such as perennial herbs, to provide resources for local residents.
- ④ **INDIGENOUS FOOD PATHWAY**  
Garden beds featuring edible indigenous species, providing variety for local residents and an educational opportunity.
- ⑤ **ACTIVE ZONE**  
A multi-generational active zone incorporating static fitness equipment with a natural palette and rubber softfall.
- ⑥ **CIRCULAR LAWN**  
This zone is designed to integrate with the shelter and provide an additional lawned area with a curved concrete seating wall.
- ⑦ **SUPPORTING INFRASTRUCTURE**  
Additional shelter, seating, litter bins and bicycle racks to provide amenity for the active and nature play zone.
- ⑧ **ENTRY WALL / SEATING WALL**  
Feature low walls. Can be used for seating and signage.
- ⑨ **NATURE PLAY**  
This interactive play space featuring a timber climbing structure, climbing totems, dry creek bed with water element, sand pit, nature inspired fence to road edge, and hardy native planting.
- ⑩ **TREES AND PLANTING**  
Trees and planting have been selected to provide interest, colour, seasonality, to increase the local biodiversity and help reduce the Urban Heat Island Effect.

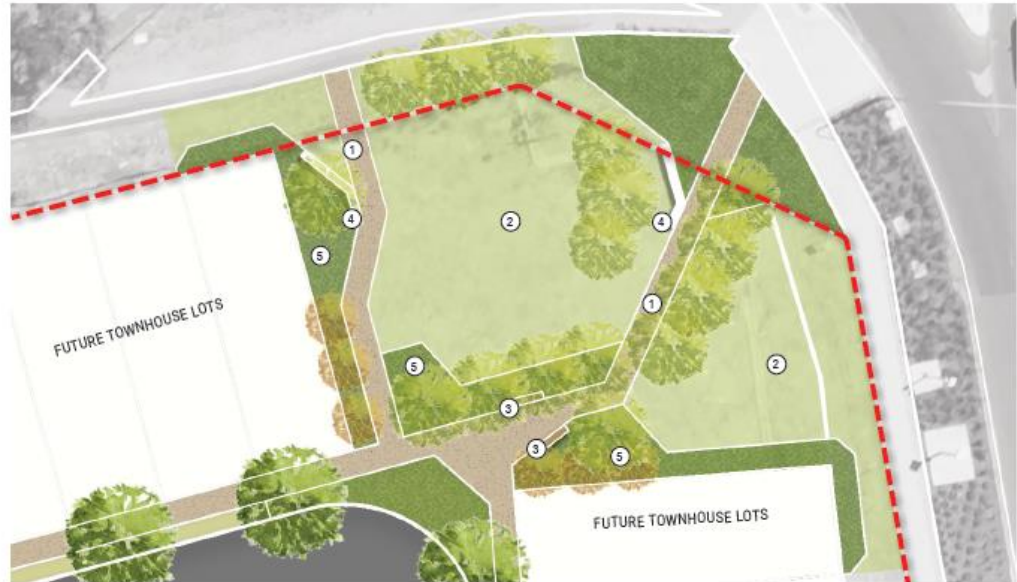


# CORNER AND LINK RESERVE CONCEPT

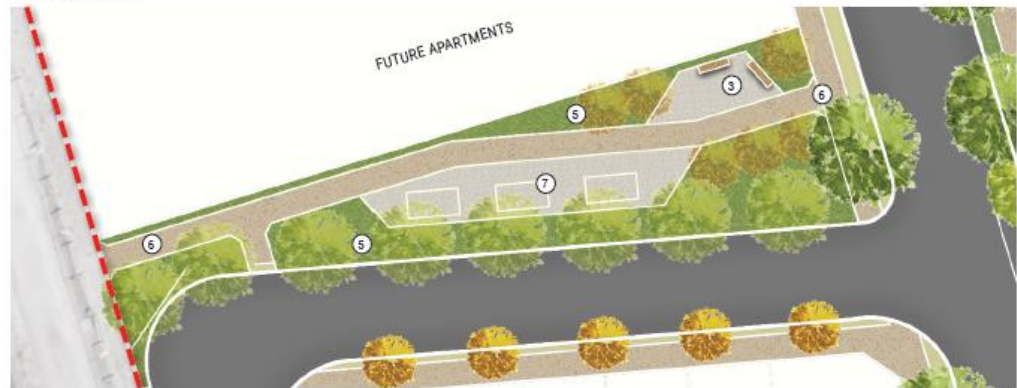
## LEGEND

- Project Boundary
- ① **FOOTPATHS**  
Accessible footpath linkages into and out of the development from Churchill Road and Regency Road.
- ② **LAWN**  
Open lawn area for passive recreation
- ③ **SEATING**  
DDA compliant seating
- ④ **FEATURE WALLS**  
Feature walls to compliment the landscape character of the central reserve.
- ⑤ **TREES AND PLANTING**  
Trees and planting have been selected to provide interest, colour, seasonality, to increase the local biodiversity through a predominate mix of native understorey plants.
- ⑥ **FOOTPATHS**  
Accessible footpath linkage providing physical and visual connection to existing shared use path (bicycle and pedestrian path) and the Islington Railway Station.
- ⑦ **LINK RESERVE**  
This space may also incorporate incidental play elements, junior play equipment such as a swing set, nature play features or static fitness equipment, which would complement the journey for people utilising the link pathway.

## CORNER RESERVE



## LINK RESERVE



# CORNER RESERVE

## LEGEND

- Project Boundary
- ① **FOOTPATHS**  
Accessible footpath linkages into and out of the development connecting to existing footpaths and pedestrian crossing at the intersection of Churchill Road and Regency Road.
- ② **LAWN**  
Open lawn area for passive recreation.
- ③ **SEATING**  
DDA compliant seating.
- ④ **FEATURE WALLS**  
Low feature walls / seating walls to compliment the landscape character of the central reserve.
- ⑤ **TREES AND PLANTING**  
Trees and planting will be selected to provide interest, colour, seasonality, to increase the local biodiversity through a predominate mix of native understorey plants. Planting will tie in to existing streetscape planting along Regency Road.
- ⑥ **ENTRY SIGNAGE / PUBLIC ART**  
Opportunity to incorporate an entry statement or public art. The corner reserve will be highly visible from multiple directions at the intersection.





# RenewalSA

We are committed to working with  
First Nations peoples to ensure  
Culture and Country is respected in  
everything we do and is represented  
through our people and projects

[www.renewalsa.sa.gov.au](http://www.renewalsa.sa.gov.au)  
[renewalsa.enquiries@sa.gov.au](mailto:renewalsa.enquiries@sa.gov.au)  
+61 8 8207 1300



Government  
of South Australia