

# Community Garden Workshop

# #1

**ADELAIDE PARK LANDS - PARK 27B**



RenewalSA  
people partnerships progress



Government of  
South Australia

**Workshop Summary**

14 October 2015



# Thank you

Events like this cannot happen without the generous support of those who attend.

We had a great turn out and were very excited to have so many passionate people in the room.

For those people who weren't able to attend we are hopeful that this document may fill you in on some of the details of what was discussed and some of the ideas that started to emerge.

# What we said

Site history

Parklands  
legislation

Environmental  
constraints

Significant and  
other trees

A staged approach

Live training site  
opportunity

## 1850s

Reserved as park lands but used as storage yard right through until the 1990s. Impacted by different uses over many years including as a wood yard.

## 1949

Road through site connected North Adelaide with north-western suburbs. The alignment of Park Terrace changed several times over many years.

## 1989

Park terrace overpass built across railway line, also impacting the site.

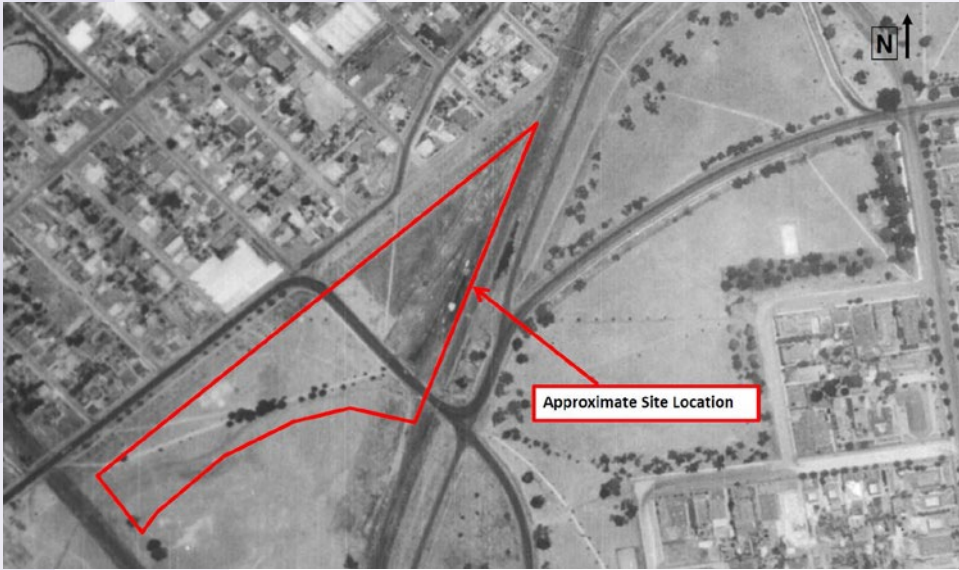
## 2012

Renewal SA undertook master planning including a section of the western Park Lands in 2011-12. As part of the Greater Park 27b Master Plan a community garden was included in the norther corner. Renewal SA consulted the community on site in Feb 2013 and there was a strong interest from many people in a community garden.

## 2015

Works to upgrade park 27B commenced with soccer club and sporting grounds facilities

First workshops run to set up and found the Bowden Community Garden



1949



1979



2012

# Key points

After our introductory exercise we had a series of presentations from a number of people who are involved in this project to set the scene.

## Park Lands legislation

- Park Land concept plan was approved by the Adelaide Park Lands Authority (APLA) and Adelaide City Council (ACC) in 2014.
- The community garden was included in the approved concept subject to:
  - the preparation of a detailed design, and
  - a management plan.
- Ongoing management of the garden will require the formation of an incorporated body with a committee (management group) and a license over the land with ACC.

## Potential environmental constraints

- The site is typical of the Park Lands.
- It has imported fill material from unknown sources – including brick fragments, ash and cinders.
- The soil has a number of contaminants that will constrain its use as a garden.
- The soil is not suitable as a growing medium for most edible produce
- Uncertainty around past use of the site for storage
- An Environmental Management Plan (EMP) to guide the safe use of soil on the site will be prepared when the design of the garden is clearer.
- The Plan will provide information on:
  - The current contamination issues of the site
  - Precautions that need to be taken during the construction of the garden, and the precautions that need to be taken after construction and during its use.



## Significant and other trees

- A number of native and non-native trees have been planted on the site
- Two regulated trees exist – a River Red Gum and a Blue Gum – which should be retained
- Other trees need to be considered carefully. Some may impact on the success of growing a community garden; however, if gardening in raised beds, roots should not be an issue for shade tolerant plants. Sunny spots away from trees will also be available in parts of the garden.

## A staged approach

- A staged approach to delivering the garden is likely – due to the time involved and funds available the garden may start with a small number of beds and could grow later when more funds become available and people's interest increases.
- The initial budget is \$60,000.

## Live Training Site Opportunity

- As part of Renewal SA's training and employment program, a Live Training Site will be created to help disadvantaged, unemployed or those local community members looking for a new qualification.
- A registered training provider will guide the delivery of work by trainees.
- The work could include garden bed construction, paths, irrigation etc.- which will emerge from the design being done with the community through these workshops.

# What you said

Seasonal  
opportunities

Picture card  
exercise

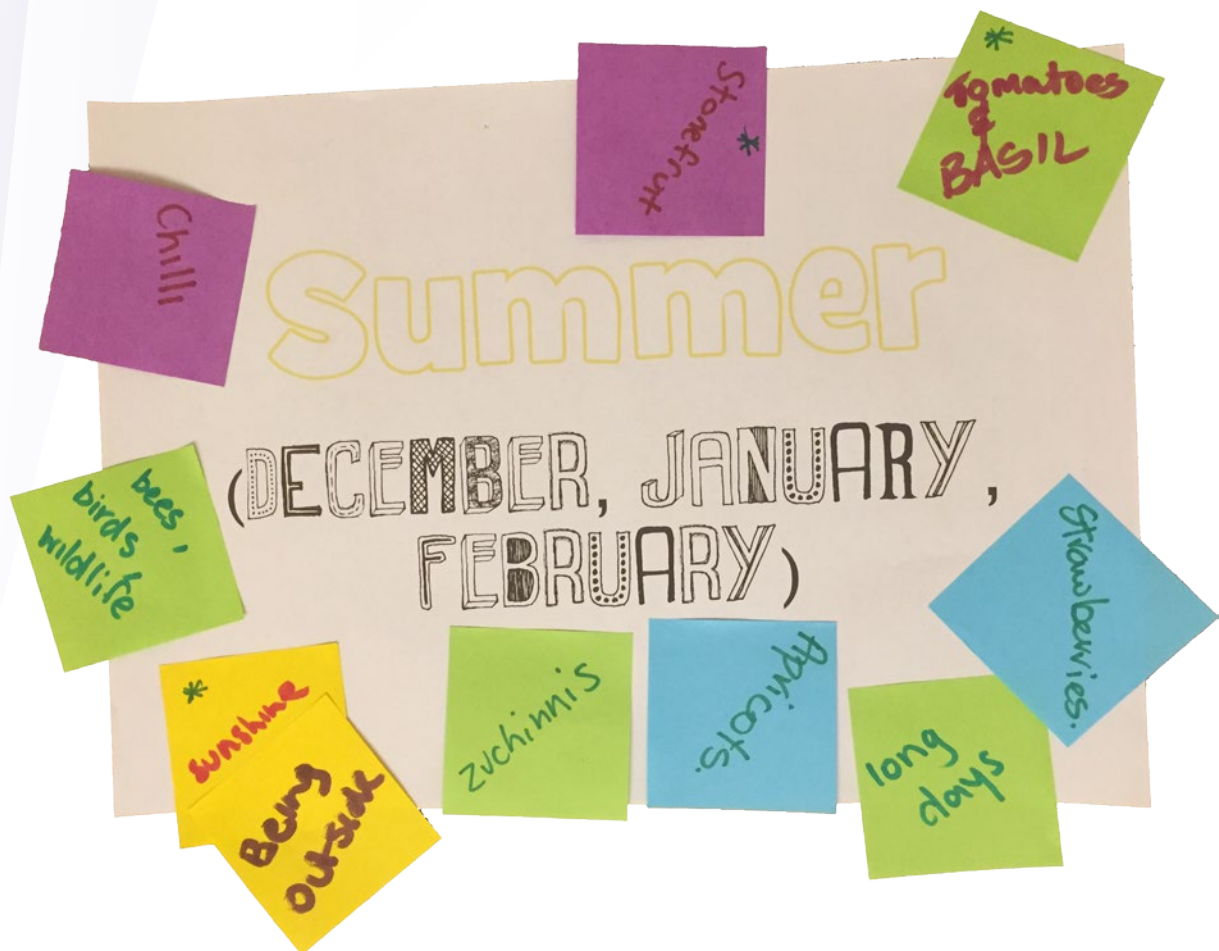
Ideas timeline

Group resources



# Seasons

We asked you to identify what your favourite elements of each season were. As a group we discovered that in summer we enjoy eating fresh produce in the sunshine, in autumn we enjoy relaxing and enjoying the beautiful colours, in winter some slow paced pruning and having time to think and plan, and in spring we enjoy the abundance of fresh produce and flowers.



salad vegetables

tomatoes ripening

# Autumn

herbs go well

Flowers (MARCH, APRIL, MAY)

③ more relaxing cooler

late veg. is eggplant ②

colour of trees ① mild weather

GROUNDING YOURSELF... Literally

GROWING

WARM

EATING FRESH HERBS + VEGETABLES

BIRDS + BEES

SAVING SEEDS

# Spring

FLOWERS

(SEPTEMBER, OCTOBER, NOVEMBER)

WEDDING



GETTING HANDS DIRTY



COLOUR

BEING CREATIVE

HAPPY

WATERING

GROWING SNAILS

3. Pruning

# Winter

(JUNE, JULY, AUGUST)

1. No watering.

Things are green.

2. Time to think & plan

Citrus

Winter cooking herbs & veg

# Picture cards

We asked you to sort through a series of picture cards and pick your favourites and to start to identify what it was about the pictures that was appealing.

We had a lot of ideas coming out of this with some very popular themes starting to emerge.

The most popular themes were: community, raised garden beds, colour, and art.



17- Red DOT  
x Multi-purpose  
Community  
Space.



19 Red  
Community  
Cultural Arts



Red 4  
-Community  
Colour,  
Functional  
Garden Bed

7. Green.  
Share knowledge  
on the noticeboard.

Green 7  
Ownership +  
communication  
-community



healthy growth. neat

Community notice board



Raised Plot: 3 Group

Productive & Different materials height.

Productive Raised beds.



Raised 2 garden - looking abundant.



8. BLUE DOT.  
 A place with  
 art & is  
 welcoming for  
 children.

8 Raised Bed  
 Sculpture



-Fun  
 attracts children  
 -Creates interest



Red 16  
 Combination  
 of flowers  
 + edible plants  
 + the flamingo  
 (public art)



FUN  
 CREATIVE

Garden sign  
 → Relax,  
 fun, cute  
 → Engage the kids



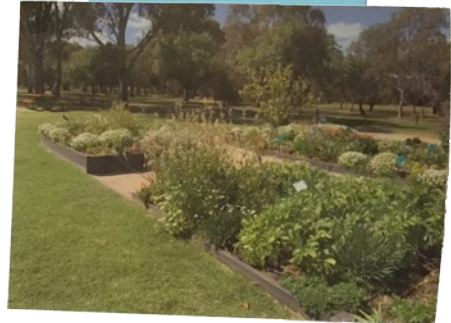
Blue 1  
Open Space,  
Composting



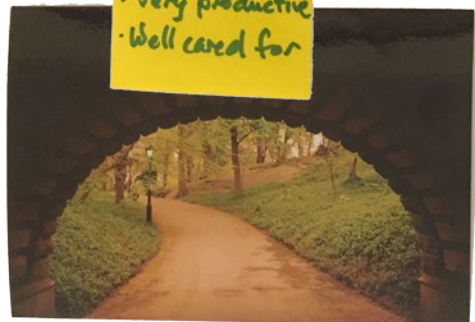
Great 20  
Produce -  
Vibrant  
Colour.



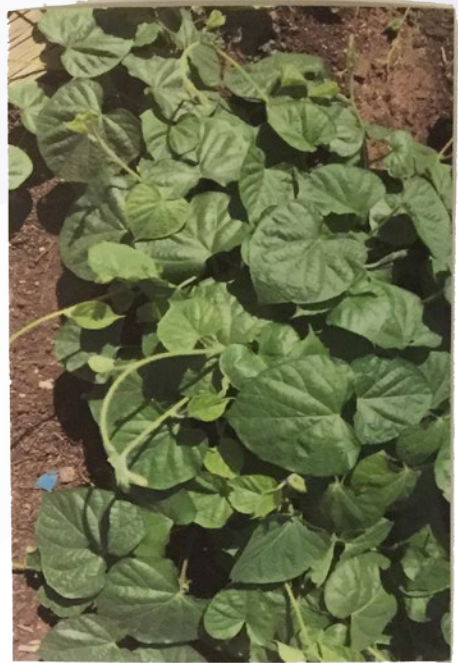
Zen  
"Peace"



3  
• Natural open setting  
• Very productive  
• Well cared for

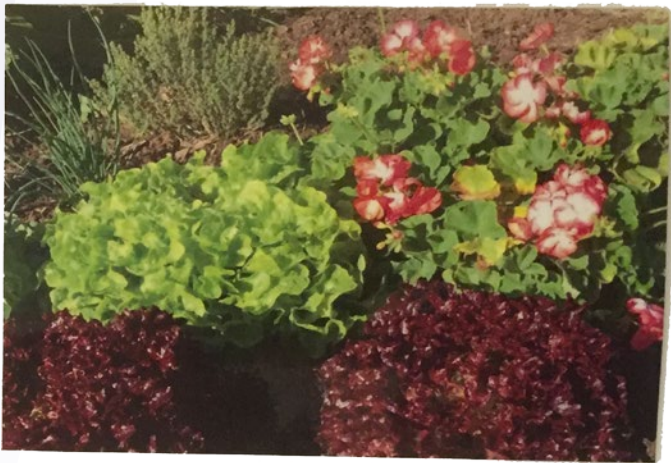


Orange 13.  
'Secret Garden'  
+ natural space.



④ BLUE  
DIVERSITY  
NATIVES + FOOD

Green  
leaves



Colour ①  
Design

Salad & flowers  
→ Colorful & fresh  
→ Can sell to the market



Nurturing  
CARING



13 RED  
Community  
BUILDING  
+ NEW FRIENDS  
Tree Pots.



4. Orange.  
Good if anyone  
wants to grow  
aesthetic plants  
that they get a  
plot to show off their



Flavour



# Ideas timeline

We knew everyone would be coming along to the workshop with some amazing ideas and wanted to start to sort those ideas into themes and time frames so that they can help to inform our future workshops.

We asked for everything from your ideas for the next 12 months right through to what you wanted the garden to be in 50 years time. We asked you to vote for your most popular ideas and you came up with the following list:

## Short term

- Raised garden beds & planting things (8 votes)
- Planting fruit trees (5 votes)
- Childrens play space and growing space (4 votes)

## Medium term

- Heirloom fruits (3 votes)
- Community education workshops (3 votes)
- A wood-oven (3 votes)

## Long term

- Improving the site so there is no need for environmental restrictions (3 votes)
- BBQ area (3 votes)

Take your time and have a good look through all of the ideas that came out of this initial workshop because we are working on ways that we can continue to work on these in the coming workshops.



1.

Lettuce, kale, spinach.  
+ herbs.

planting fruit trees

Planting Veges

Flowers for colour, to look at and pick for name!

community liaison ACC

# 12 MONTHS

INTERESTING ARCHITECTURE

potted plants for quick growth

above ground orchard

Local School Group inv.

Community Engagement

ANNUAL VEGIES. HERBS.

Helping to get it started

Raised garden beds

Open - weekly approach to planning  
• To get hands on and learn a real term long term

Short term development (eg. signs) to ensure establishment of a programme

2.

Raised garden beds <sup>x3</sup> <sub>x2</sub>  
- picking things!

herbs / salads

WORMS

Propagating plants

Growing veg

Building Shelter

Compost

picking oranges

PROJECTS / BUILDING MAKING STUFF

Shade / hang out area

A place to look + prepare food / produce.

A space for children - play + grow  
Children's garden beds

Bench seats

FREE FRUIT  
FOR ALL

SEED BANK 4.

Pizza/wood oven

Community Development  
→ bringing people together.

Strong partnerships + support for garden

Expanding - make more internet

HEIRLOOM FRUIT

Some exotics?

Full team expansion of garden areas plus 100sqm left for other things

Productive fruit trees (potted)

Compost area

Citrus to EAT

Annual Market

3 YEARS

picking green vegetables

beehives

Not a 'closed garden'

EXPERIMENTAL AREAS

collect food scraps for composting from garden & other sources

Community education/workshops sharing knowledge

- How to grow things
- How to teach things

3.

Seeing the change in the garden over time.

documenting this some how?

STILL IN EXISTANCE ✓

Looking at renewal

20 YEARS

Circulation/ "crop" rotation

BBQ area

Not reaching 'capacity'

Model for community garden

+ 50 YEARS

Continue soil improvement

GROWING PAST THE ORANGE BARRIER.

plant swap, seed bank

+ biggest Best Community garden in Adelaide!

long-term integrated garden & play space & school area (as optional)

Fruit & veg stall

# Group resources

Everybody involved in this project has resources that they can bring. For some, this is an amount of spare time, for others, a passion, or professional expertise.

We wanted to start building up a picture of some of the resources that already exist within the group and were thrilled to see how many skills and passions emerged.

This is just the beginning of the list, and over time this list will grow as more people come to the project.

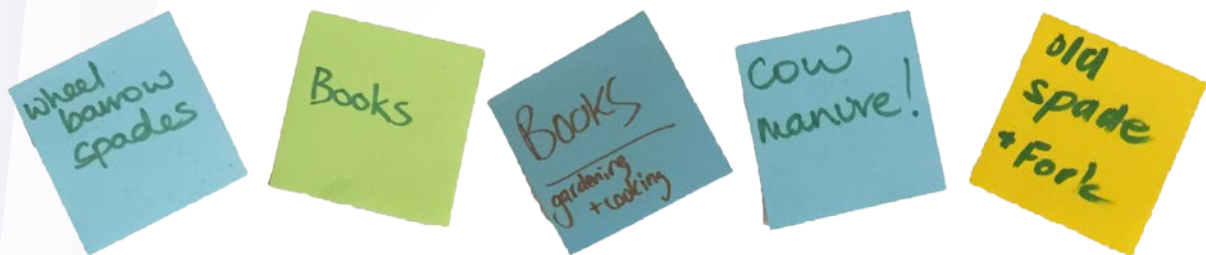
The following pages present the resources that were identified during this workshop.



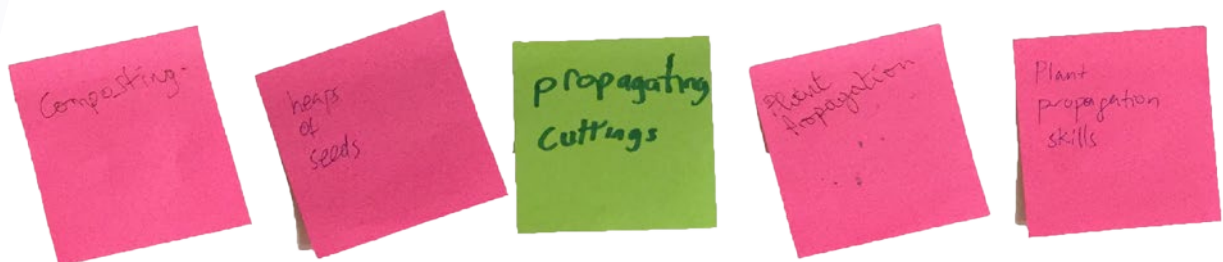
## Professional skills



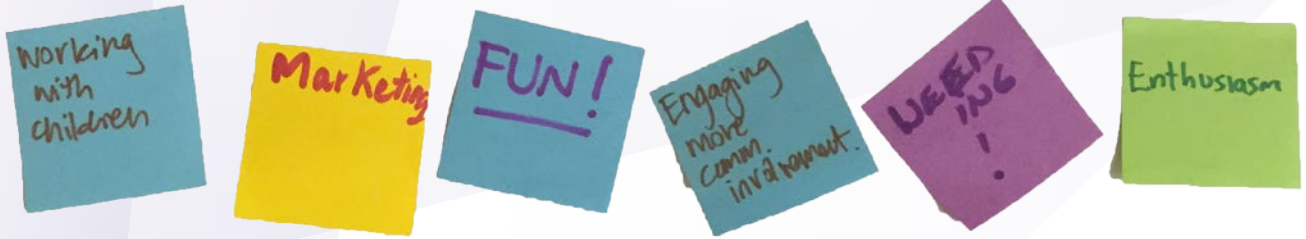
## Tools and equipment



## Plants and cuttings



## Passions



## Hobbyist skills



## Other resources



# Where to next?

Workshop 2:  
Propagating a  
design

Workshop 3:  
Governance  
structure and  
strategy

Next workshop:

Wednesday 11th November 2015  
5:30pm, Plant 1, Bowden

To get involved contact Diane Zerna on:  
8346 7170 or [diane.zerna@sa.gov.au](mailto:diane.zerna@sa.gov.au)