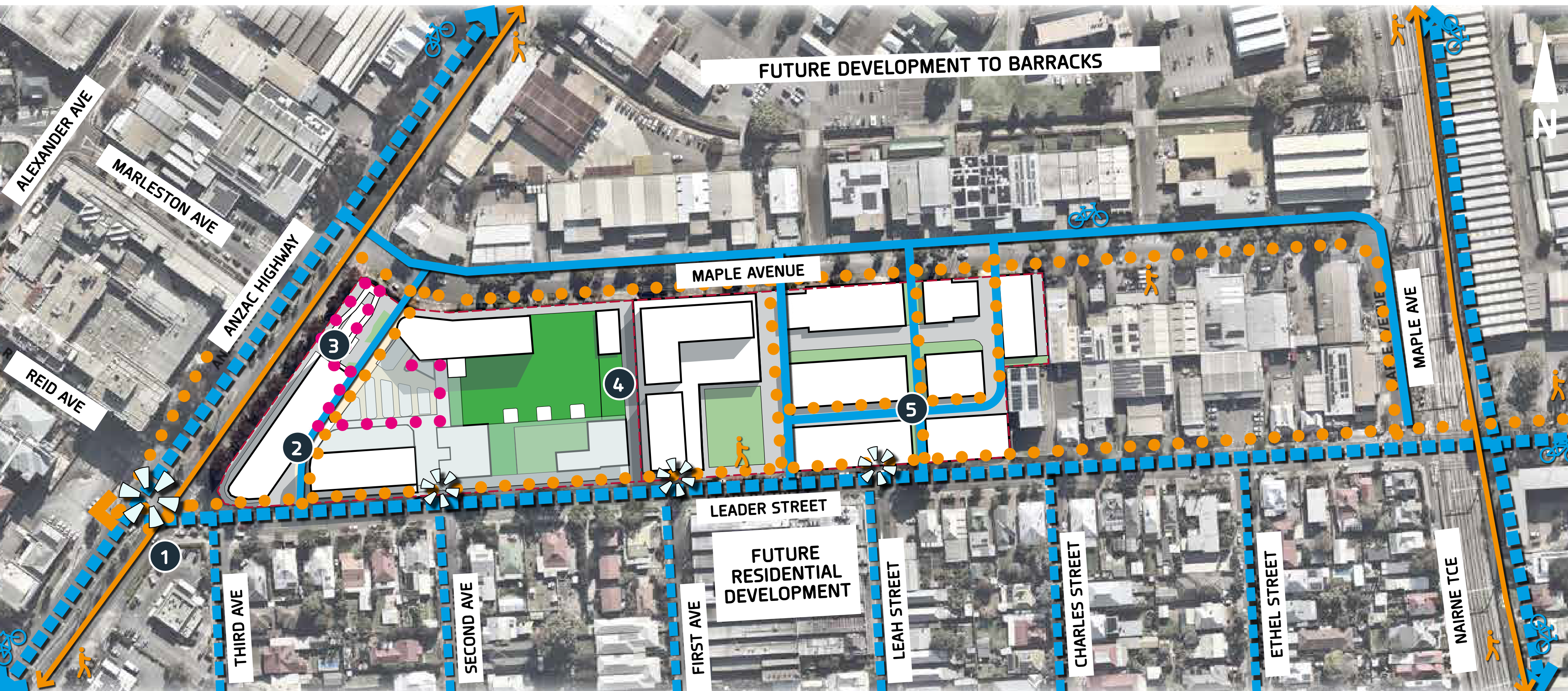


MOVEMENT

Locale Forestville will be connected through a high quality amenity green street and reserve network, enabling safe walking and cycling networks and prioritising people over vehicles. This interconnected network of green streets and open spaces will ensure that residents are within a short walk of all their daily needs, improving health and wellbeing and reducing their carbon footprint.

All streets are envisioned as civic spaces, with high quality footpaths, landscaping and building facades. Deep soil areas will be provided to increase tree canopy cover in streets. The careful detailed design of the streetscape will assist in reinforcing the streets as priority places for people and enforcing the slow movement of vehicles.

PEDESTRIAN AND CYCLE PATH NETWORK



LEGEND

Proposed pedestrian pathways

Existing pedestrian pathways

Existing shared car/cycle lane

Proposed Shared car/cycle lane

Proposed internal pedestrian pathway

Proposed intersection upgrade - improved safety for pedestrian & cycle access

1.

Proposed intersection improvements to facilitate safe pedestrian crossing on Anzac Highway and Leader Street
2.

Proposed one way configuration for High Street with left turn from Leader Street Only
3.

Pedestrian friendly shared use space to promote fluid movement across Locale 2 and 3 across multiple levels
4.

Loading access only connecting Maple Avenue and Leader Street
5.

Treatment of Locale 1 local street as a priority pedestrian friendly with mature tree coverage connecting the terrace houses to the public open space.

Please let us know your feedback on movement - vehicle, cycle and pedestrian

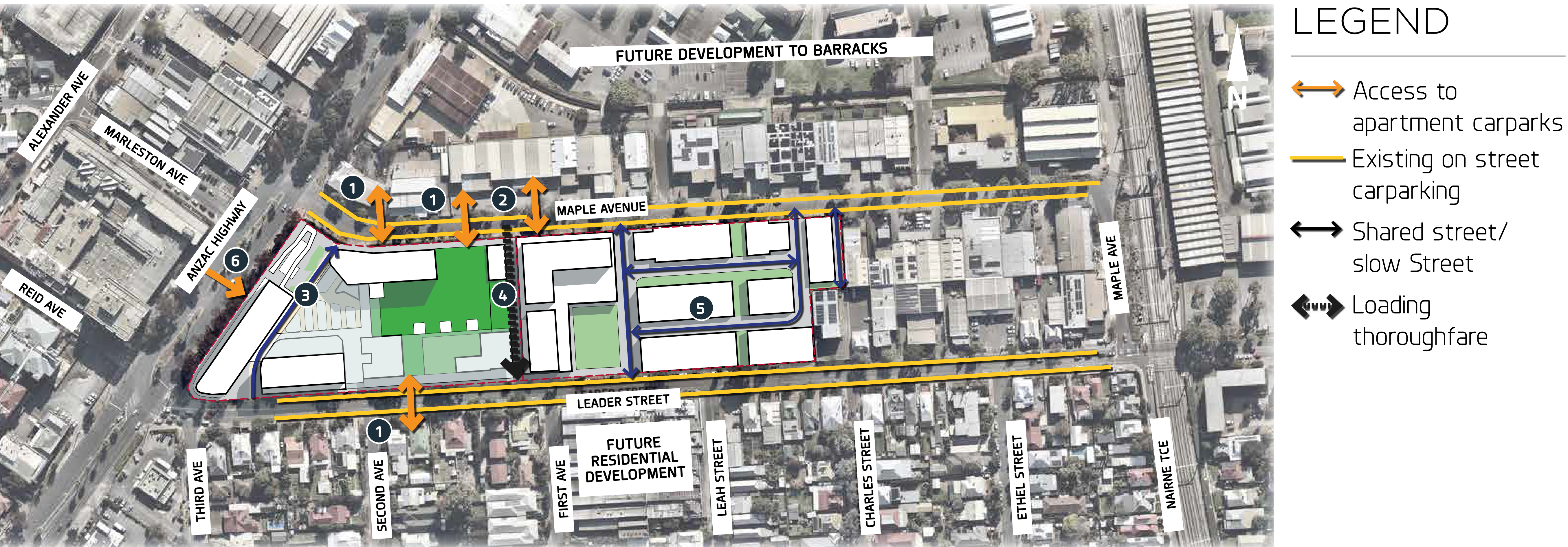
COMMENTS
HERE



MOVEMENT

ACCESS AND PUBLIC CAR PARKING

Key vehicle access to the site is planned to be via Anzac Highway, Maple Avenue and Leader Street. Ample basement car spaces are planned to service the retail and commercial development and reduce pressure on on-street parking.



1. Public and private car access to the basement for retail, commercial, residential and educational users and tenants, in and out access
2. Private car access to the residential tower for the residential tenants
3. One way configuration for High Street with left turn from Leader Street Only, parking available along the side of the street
4. Private Loading laneway, no public access or parking
5. Public access for the terrace houses and parks throughout Locale 1
6. Public and private car access to the basement for retail, commercial, residential and educational users and tenants, in access only.

Please let us know your feedback on movement - access and car parking

COMMENTS
HERE

MOVEMENT

PUBLIC TRANSPORT

The site enjoys close access to public transport – trains, trams and buses within easy walking distance.



Existing bus stops both on Anzac Highway and Leader Street directly connected via entry point to each Locale.

Walkable distance to existing Tram and Train station further strengthening the precinct links to Adelaide CBD and greater Adelaide beyond.

Please let us know your feedback on movement – public transport

COMMENTS
HERE

SOCIAL PINPOINT

INTRODUCING SOCIAL PINPOINT

Renewal SA is using Social Pinpoint, a widely used and successful online engagement tool, to collect community feedback on the draft Master Plan for the Forestville development.

Social Pinpoint has been used for public engagement successfully by many councils and government agencies (including Renewal SA) in Australia and globally.

Social Pinpoint features include interactive maps, discussion walls, survey and informative pages.

Following on from the online Forestville community engagement in August 2021, a draft Master Plan has been developed for the site.

Our team is here today to demonstrate how easy it is to use Social Pinpoint, and we've provided instructions online too.



The Locale Master Plan is represented on Social Pinpoint by a 'map'

HOW DO I USE SOCIAL PINPOINT?

Social Pinpoint allows you to access information and provide feedback quickly and conveniently – using a computer (desktop/laptop) or a mobile device.

Start by reading the information provided on the home page, access more information on the draft Master Plan on the map's sidebar menu (left), to learn more about the project and how you can provide your feedback.

The 'map' presents the draft Master Plan where you can access more detailed information by selecting your area of interest from the legend, or by clicking on the specific area of interest on the map. Project information, images and mini-survey questions will appear for your feedback.

You can visit

<https://renewalsa.mysocialpinpoint.com/forestville-locale>
as many times as you wish between November 19 and December 11, 2022.

Please contact Renewal SA should you require further information, including information on alternative ways to provide feedback by visiting
renewalsa.engagement@sa.gov.au

**DELIVERING AN INSPIRING
URBAN FUTURE**

IDEAS OR COMMENTS

COMMENTS
HERE

Is there anything you wish to comment on that hasn't been addressed?

What did you think of today's Drop-in session?

Thank you for participating in today's community drop-in session.

We encourage you to visit Social Pinpoint where you can view the draft Master Plan online and share your feedback.

Please contact Renewal SA should you require further information, including information on alternative ways to provide feedback.

DELIVERING AN INSPIRING
URBAN FUTURE

NEXT STEPS AND TO BE KEPT UPDATED

Key Milestone dates for the Forestville Development:

ACTIVITY	DATES*	
Renewal SA Community Engagement Stage 1	2021	✓
Renewal SA select Consortium Vision & Concept Master Plan	2021-2022	✓
Refine Concept Master Plan working with Stakeholders	Jun-Dec 2022	
Preliminary review Master Plan with Renewal SA	Sept 2022	✓
Community Engagement Stage 2	Nov 2022	
Final Master Plan endorsement by Renewal SA	Dec 2022	
Lodge Development Application		
<ul style="list-style-type: none"> • Land Division (retail super lot/residential allotments) • Building (retail/residential) • Public notification of Development Application 	Early 2023	
Commence construction	2024	
First residents	2025	
Open Market Square	2026	

* Note: the above project timeline is indicative only and may be subject to change.

To be kept informed on progress for the Forestville Development please visit renewalsa.sa.gov.au/projects/Forestville



Commercial Retail Group

buildtec

PEET